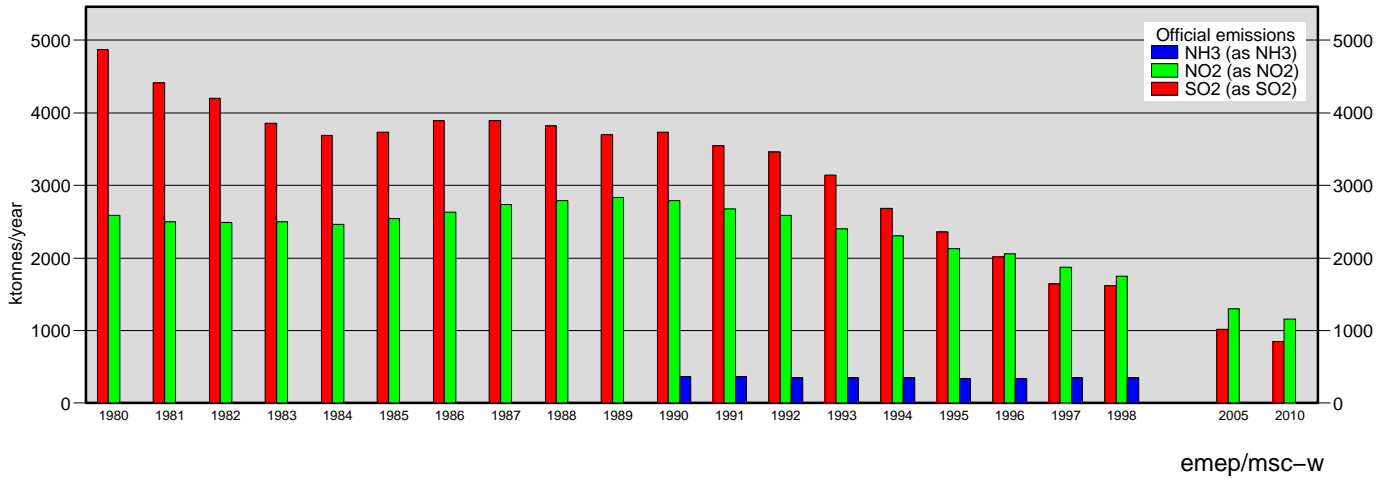
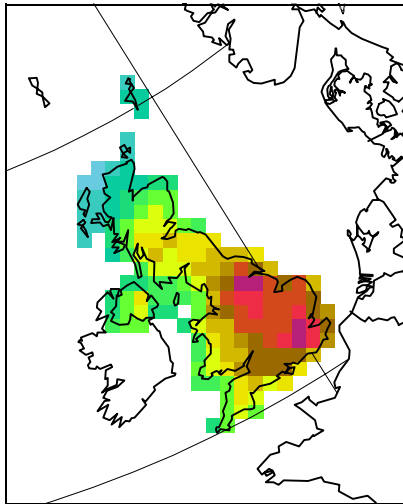


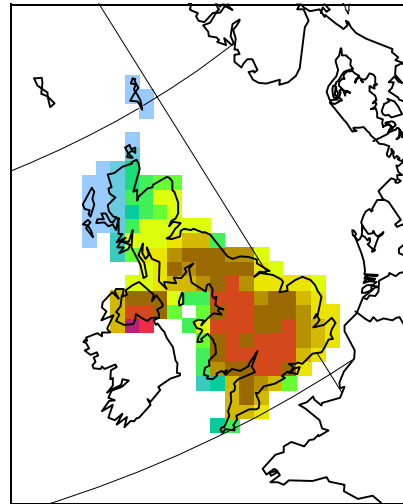
# United Kingdom



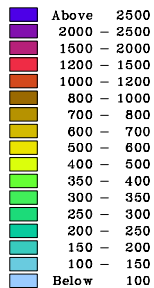
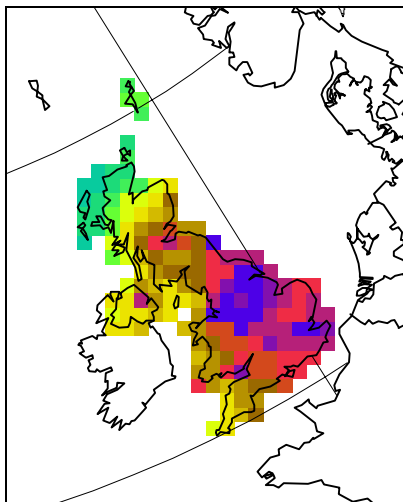
1998 deposition of oxidized nitrogen  
mg N/m<sup>2</sup>



1998 deposition of reduced nitrogen  
mg N/m<sup>2</sup>



1998 deposition of sulphur  
mg S/m<sup>2</sup>



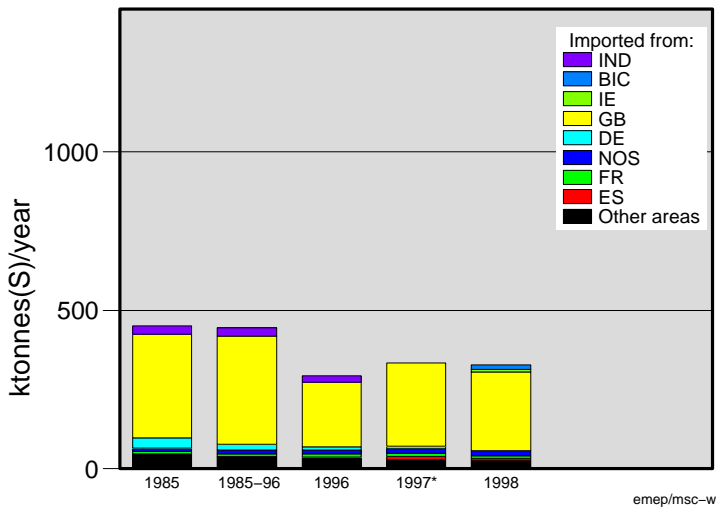
Country allocated maps and ASCII data files for air concentrations and depositions are available at

<http://www.emep.int>

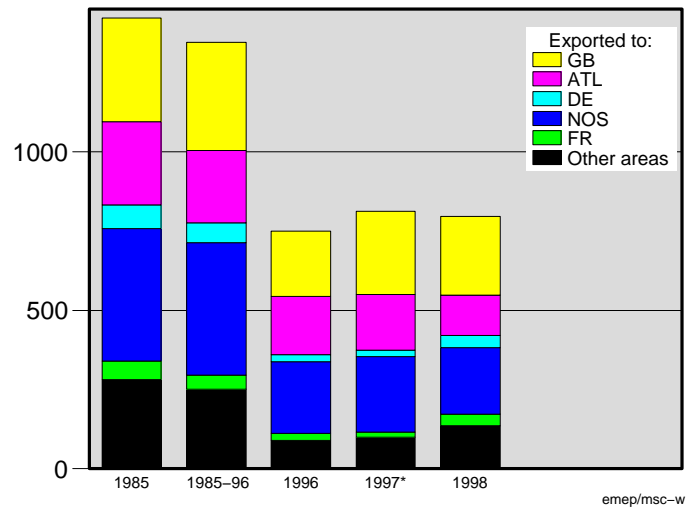
emep/msc-w

Deposition of oxidised sulphur

United Kingdom

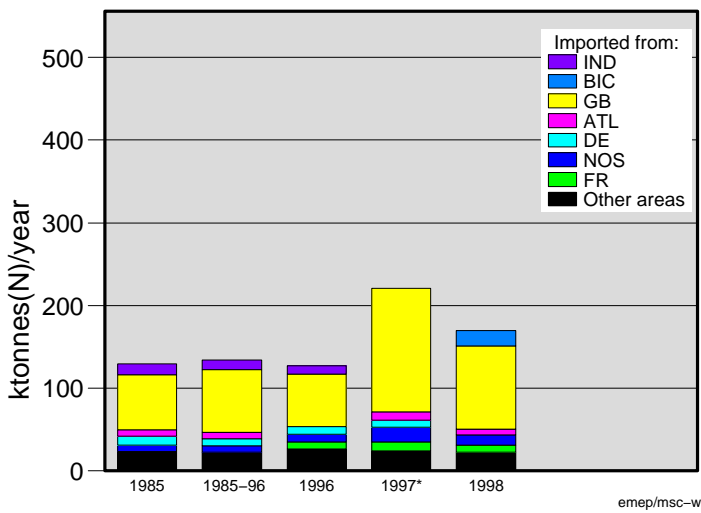


United Kingdom

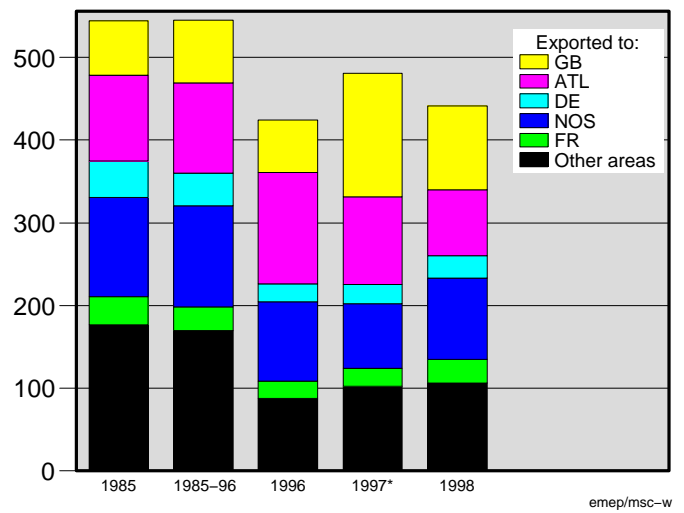


Deposition of oxidised nitrogen

United Kingdom

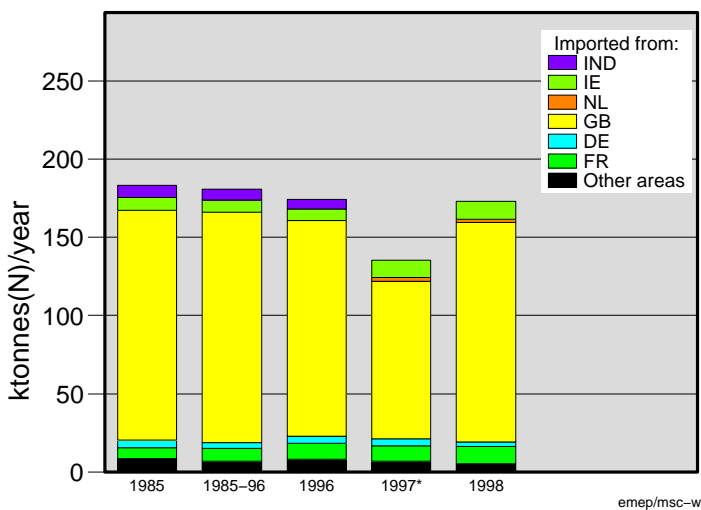


United Kingdom

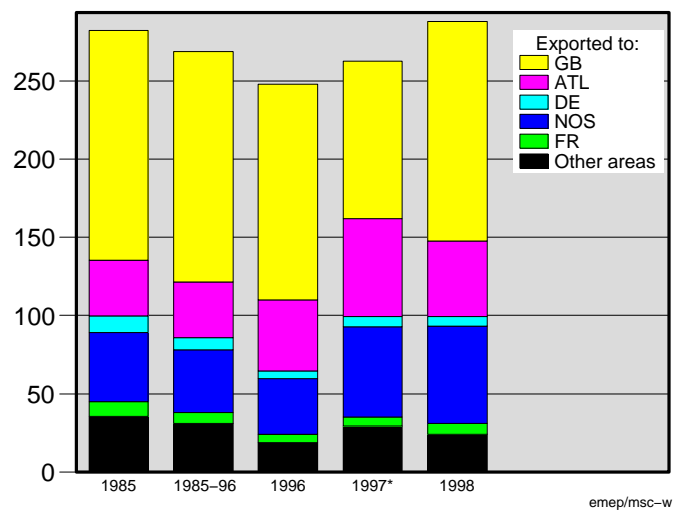


Deposition of reduced nitrogen

United Kingdom



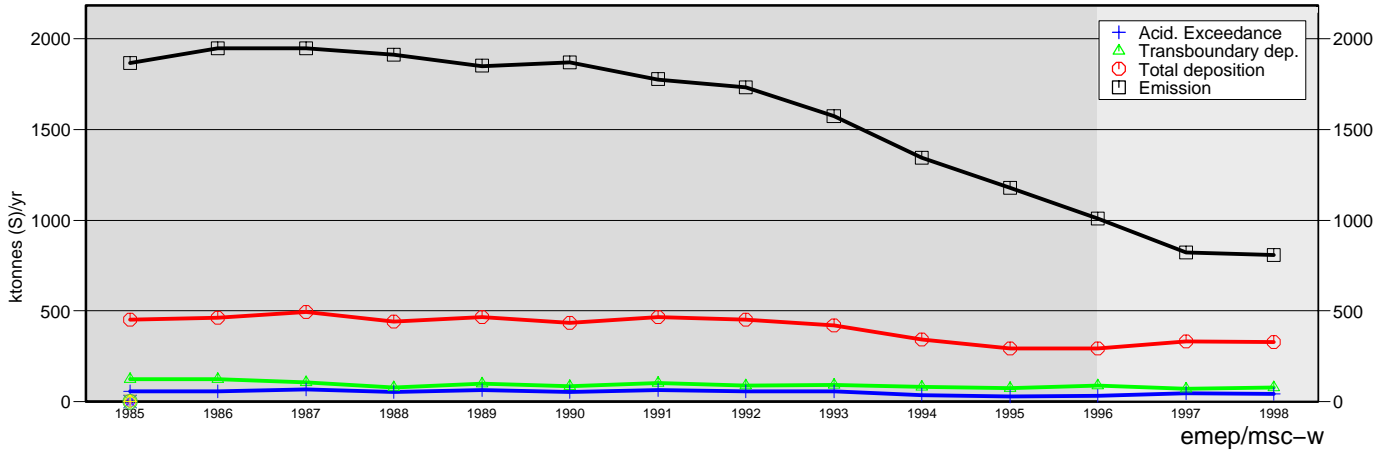
United Kingdom



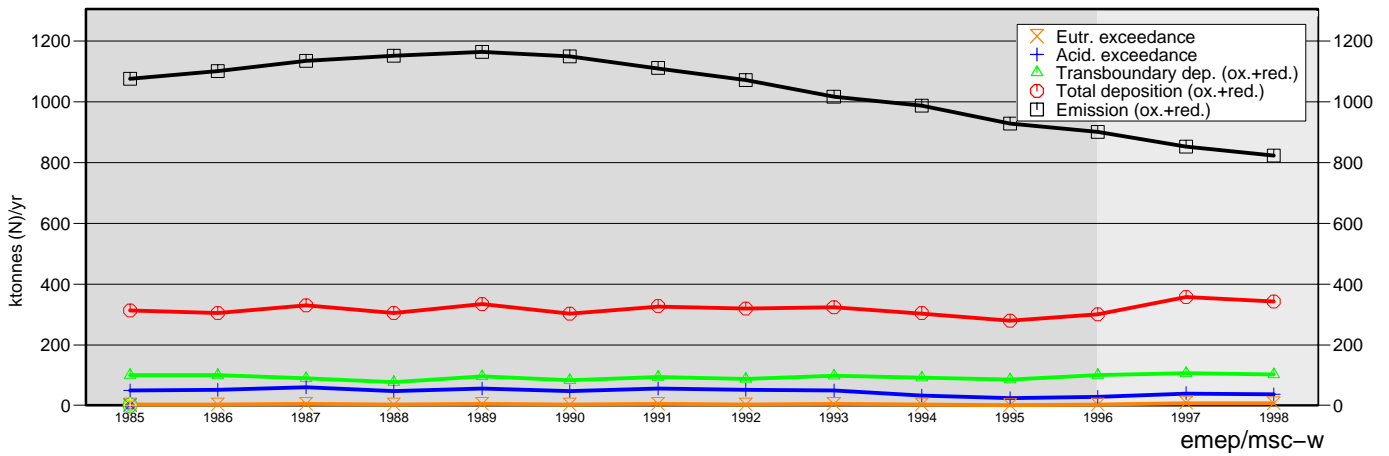
\* No recalculations have been made for 1997. These values are the same as reported last year.

# United Kingdom

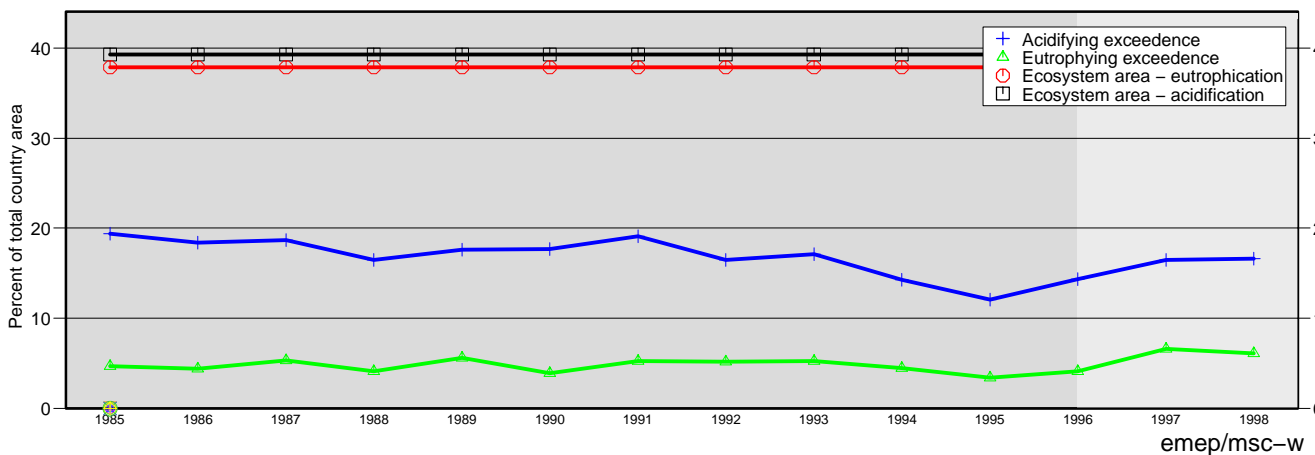
## ACIDIFYING SULPHUR



## ACIDIFYING AND EUTROPHYING NITROGEN



## PERCENT OF COUNTRY AREA EXPOSED TO EXCEEDANCE OF CRITICAL LOADS



**Overview of data uncertainty for precipitation and air quality measurements**  
**A < ±10%, B < ±25%, C < ±30%, D > ±30% or unknown**

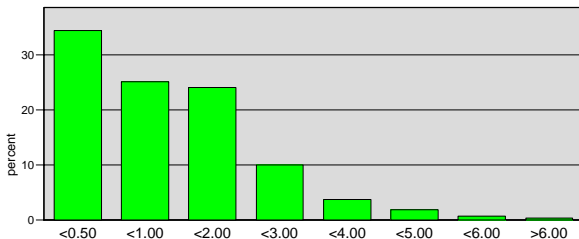
Air DATA QUALITY	SO2(g)	NO2(g)	HNO3(g)	NH3(g)	SO4(p)	NO3(p)	NH4(p)	HNO3(g)+NO3(p)	NH3(g)+NH4(p)
GB2 Eskdalemuir	B				A			A	A
GB4 Stoke Ferry	B				A				
GB6 Lough Navar	B				A				
GB7 Barcombe Mills	B				A				
GB13 Yamer Wood	B				A				
GB14 High Muffles	B				A			A	A
GB15 Strath Vaich D.	B				A				
GB16 Glen Dye	B				A				
GB36 Harwell		C							
GB37 Ladybower		C							
GB38 Lullington Heath		C							
GB43 Narberth		C							
GB45 Wicken Fen		C							

Precipitation DATA QUALITY	SO4(l)	NO3(l)	NH4(l)	pH	H prec	Na	Cl	Ca	Mg	K	Conductivity prec
GB2 Eskdalemuir	A	A	B	A		A	A	B	B	A	A
GB4 Stoke Ferry											
GB6 Lough Navar	A	A	B	A		A	A	B	B	A	A
GB7 Barcombe Mills											
GB13 Yamer Wood	A	A	B	A		A	A	B	B	A	A
GB14 High Muffles	A	A	B	A		A	A	B	B	A	A
GB15 Strath Vaich D.	A	A	B	A		A	A	B	B	A	A
GB16 Glen Dye											
GB36 Harwell											
GB37 Ladybower											
GB38 Lullington Heath											
GB43 Narberth											
GB45 Wicken Fen											

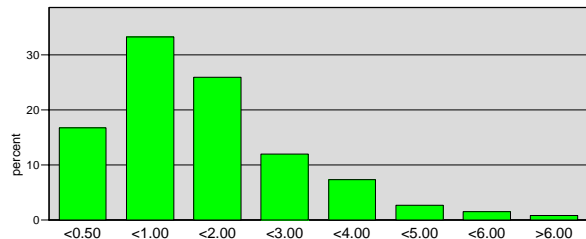
Comments:

No updated information for 1998, same quality as for 1997 is assumed. It is strongly recommended to start sampling nitrogen air components at all stations and increase the completeness of the NO2 measurements.

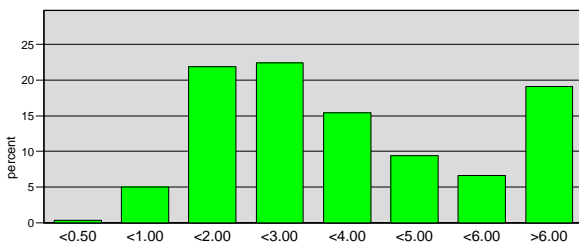
GB NH3+NH4 air meas (2 stations)



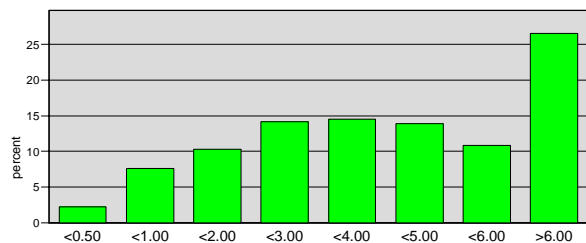
GB NH3+NH4 air mod



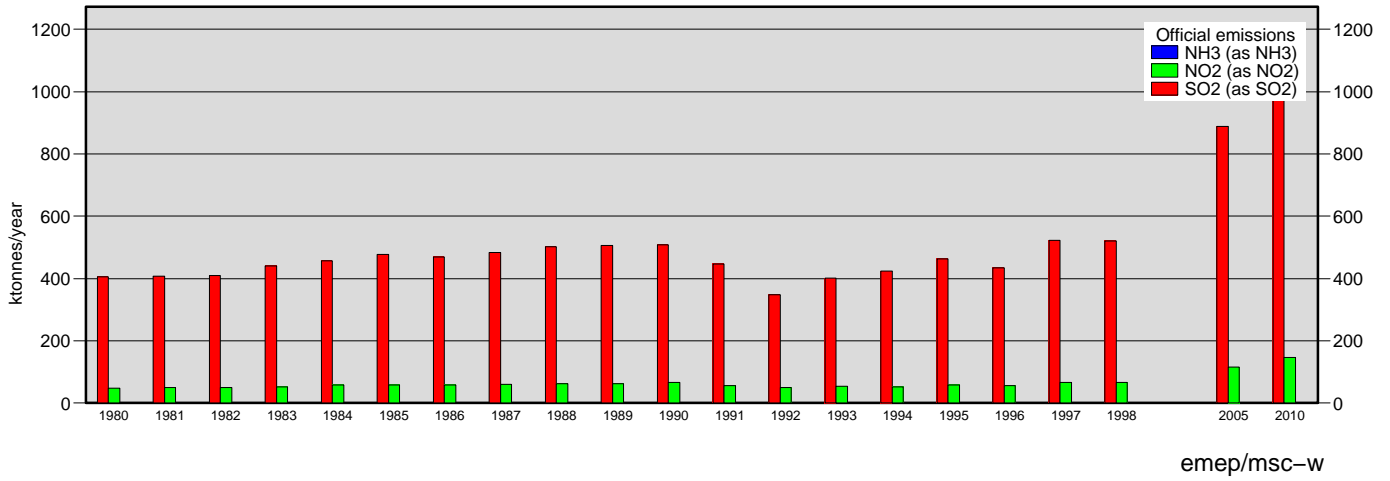
GB NO2 air meas (5 stations)



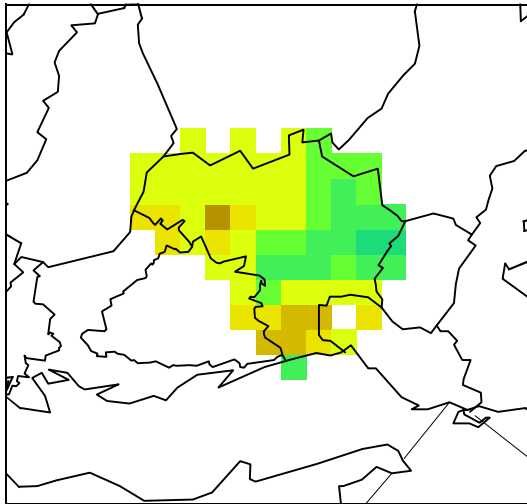
GB NO2 air mod



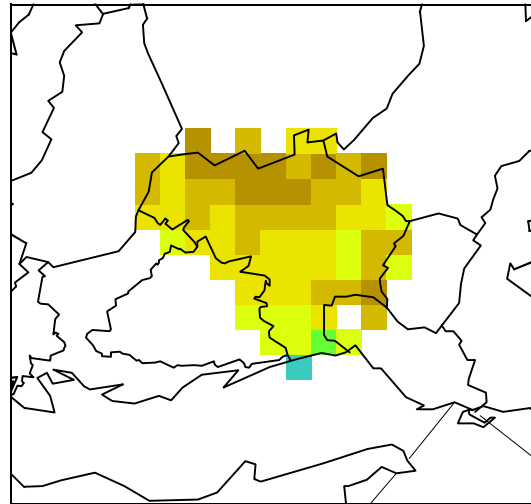
# Yugoslavia



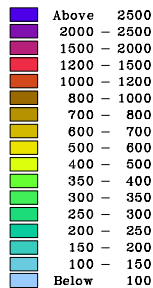
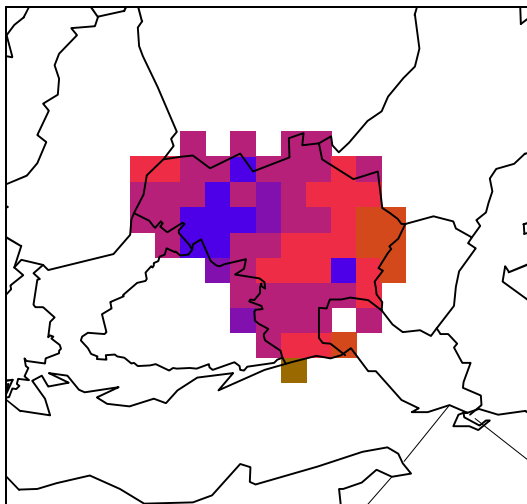
1998 deposition of oxidized nitrogen  
 mg N/m<sup>2</sup>



1998 deposition of reduced nitrogen  
 mg N/m<sup>2</sup>



1998 deposition of sulphur  
 mg S/m<sup>2</sup>

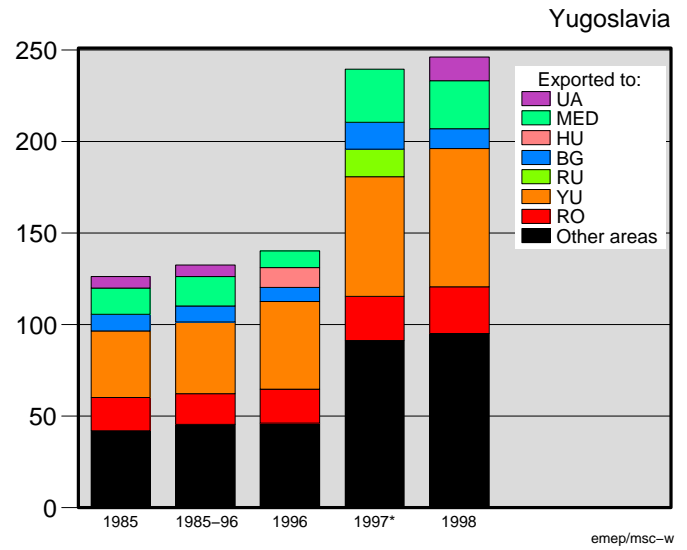
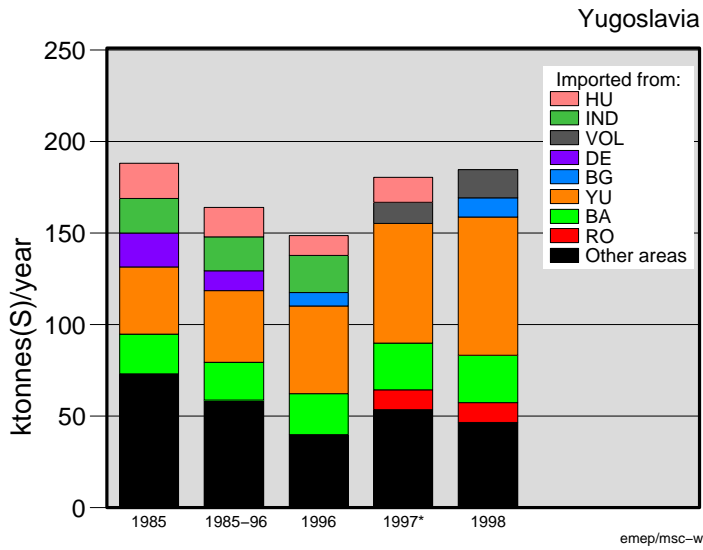


emep/msc-w

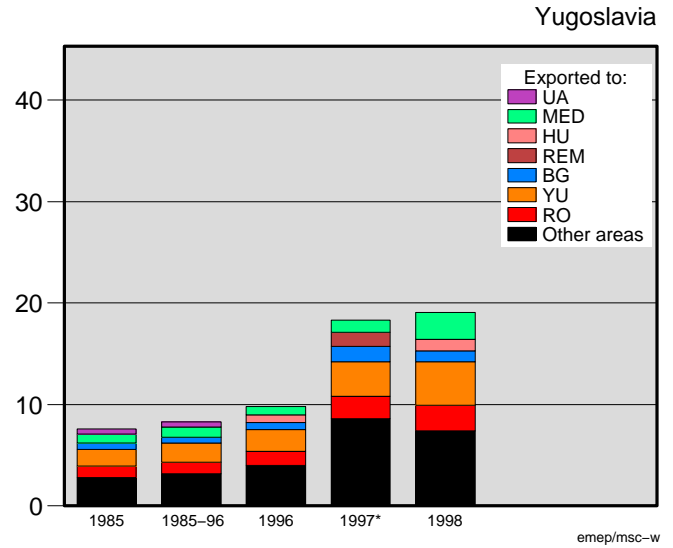
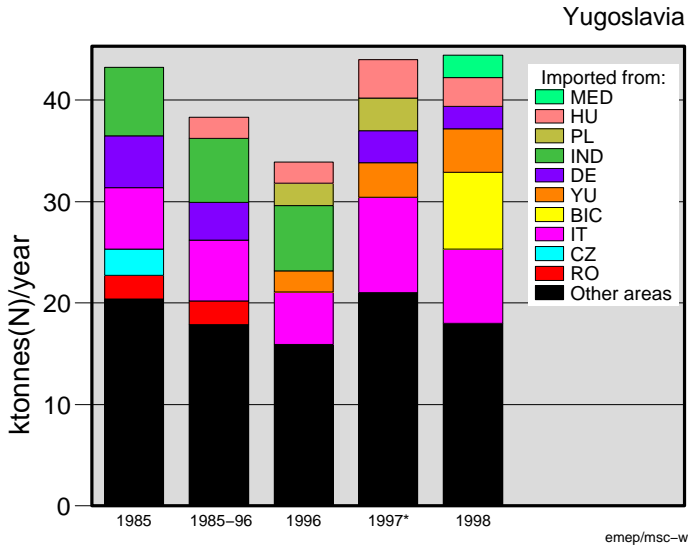
Country allocated maps and ASCII data files for air concentrations and depositions are available at

<http://www.emep.int>

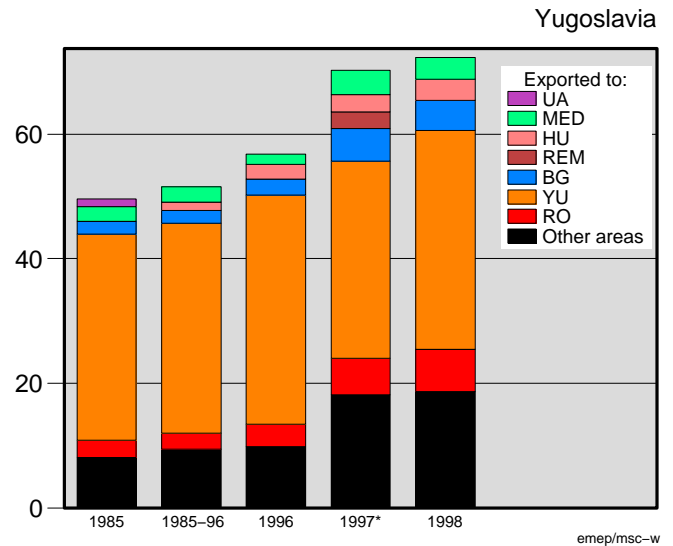
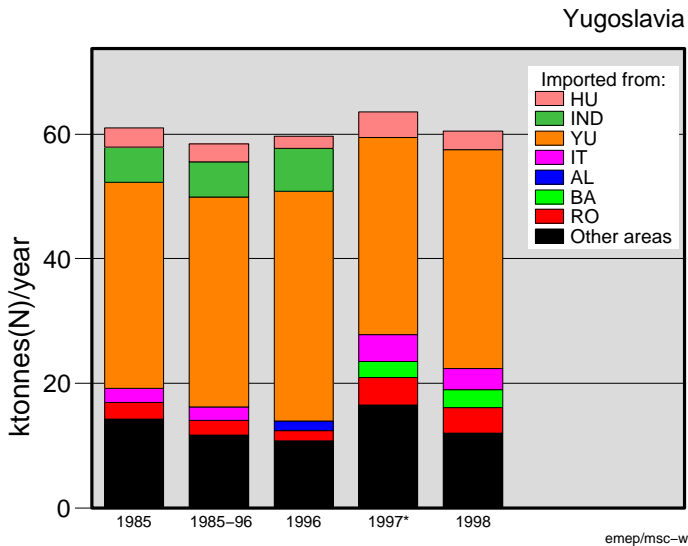
Deposition of oxidised sulphur



Deposition of oxidised nitrogen

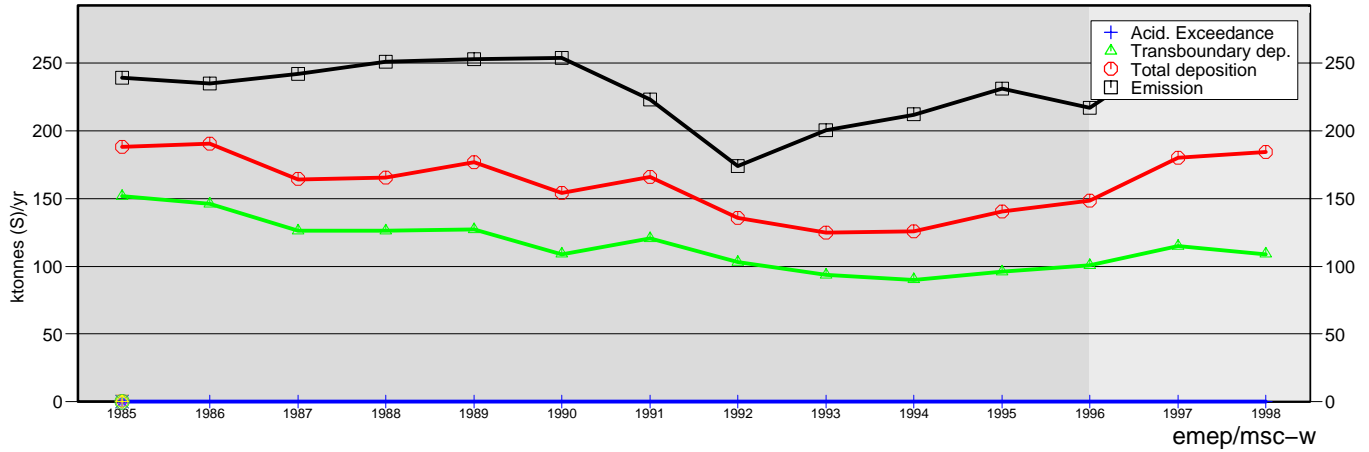


Deposition of reduced nitrogen

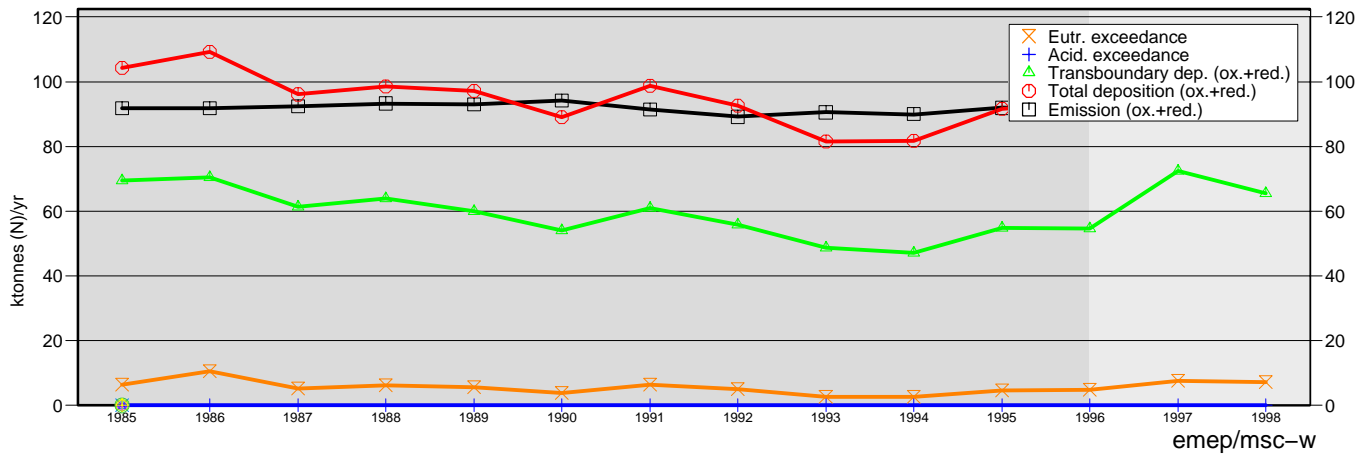


\* No recalculations have been made for 1997. These values are the same as reported last year.

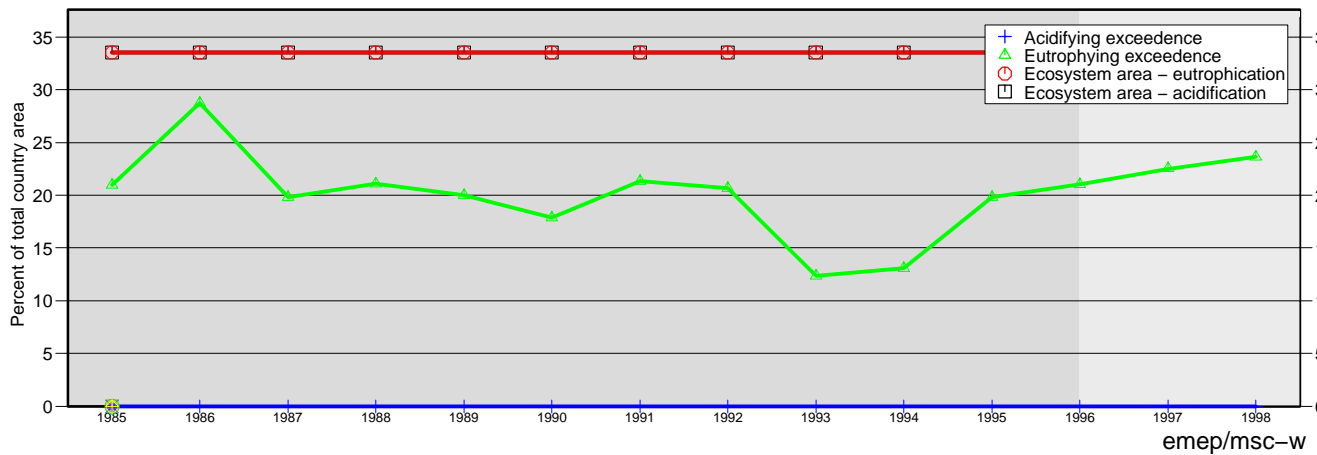
## ACIDIFYING SULPHUR



## ACIDIFYING AND EUTROPHYING NITROGEN



## PERCENT OF COUNTRY AREA EXPOSED TO EXCEEDANCE OF CRITICAL LOADS



NOTE: Critical load data derived by CCE as there is no available official submission.

## Overview of data uncertainty for precipitation and air quality measurements

A < ±10%, B < ±25%, C < ±30%, D > ±30% or unknown

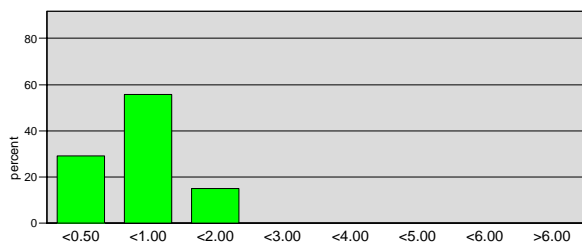
Air DATA QUALITY	SO2(g)	NO2(g)	HNO3(g)	NH3(g)	SO4(p)	NO3(p)	NH4(p)	HNO3(g)+NO3(p)	NH3(g)+NH4(p)
YU5 Kamenicki vis	D	B							
YU8 Zabljak	D	B							

Precipitation DATA QUALITY	SO4(l)	NO3(l)	NH4(l)	pH	H prec	Na	Cl	Ca	Mg	K	Conductivity prec
YU5 Kamenicki vis	B	C	B	A		A	D	B	B	A	A
YU8 Zabljak	B	C	B	A		A	D	B	B	A	A

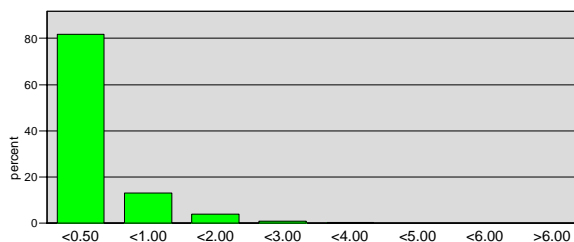
**Comments:**

Analytical problems revealed in the intercalibration. The NO2 and SO2 measurements have too high detection limit, seen clearly in the frequency distribution. Need for updating the measurement methods both in laboratory and in field. It is recommended to extend the programme to include measurements of all N-compounds.

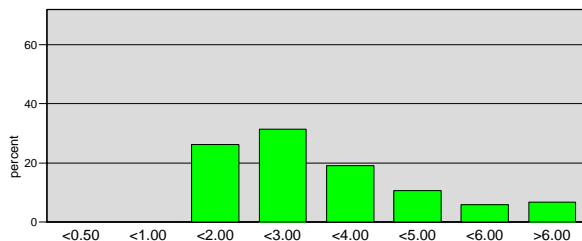
YU NO3 precip meas (2 stations)



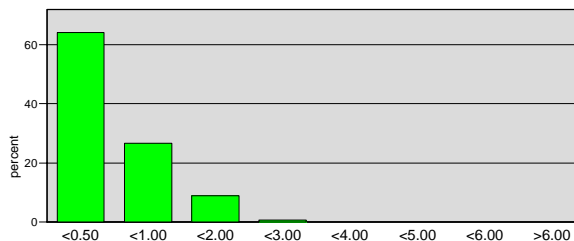
YU NO3 precip mod



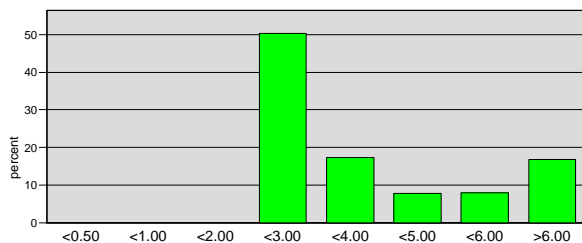
YU NO2 air meas (2 stations)



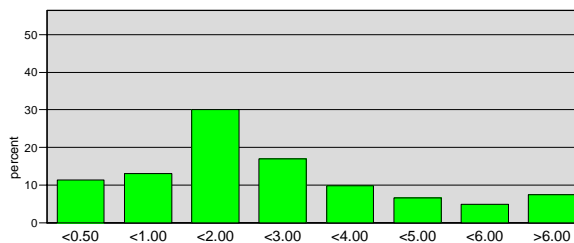
YU NO2 air mod



YU SO2 air meas (2 stations)

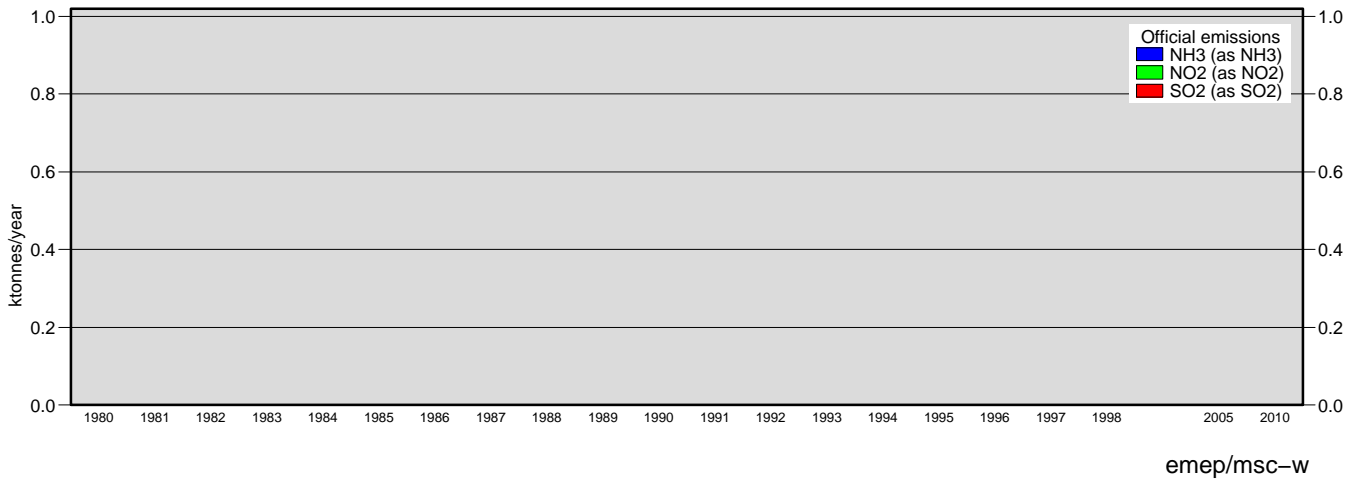


YU SO2 air mod

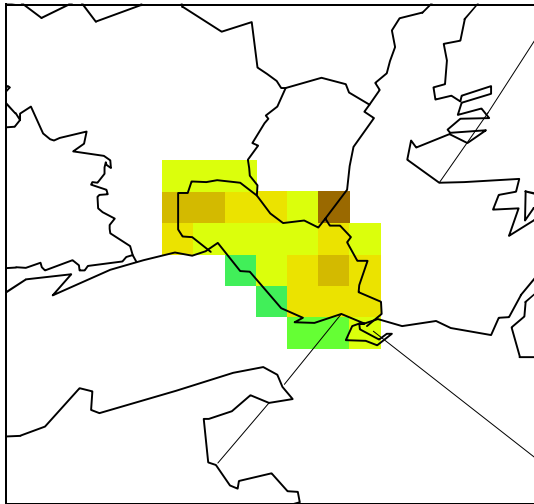




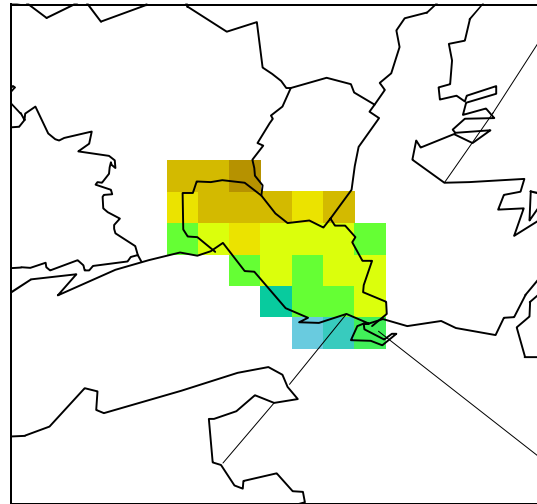
# Albania



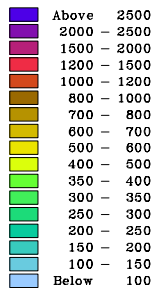
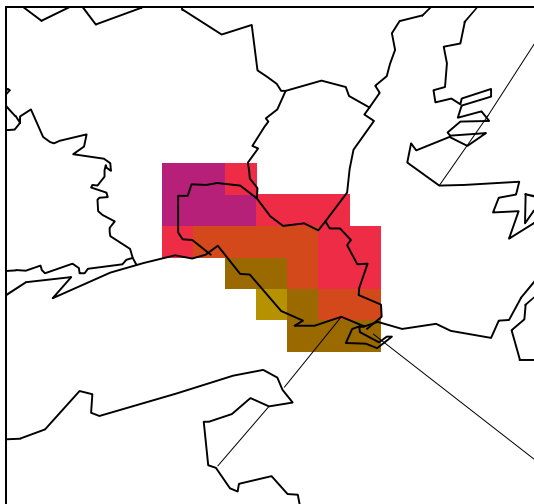
1998 deposition of oxidized nitrogen  
mg N/m<sup>2</sup>



1998 deposition of reduced nitrogen  
mg N/m<sup>2</sup>



1998 deposition of sulphur  
mg S/m<sup>2</sup>



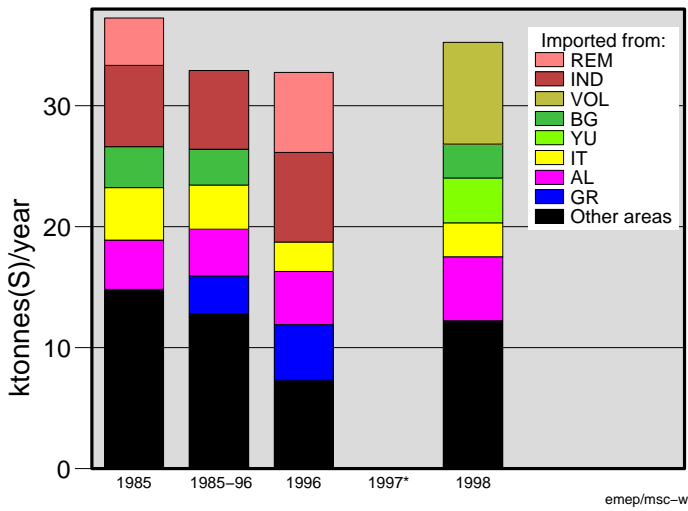
emep/msc-w

Country allocated maps and ASCII data files for air concentrations and depositions are available at

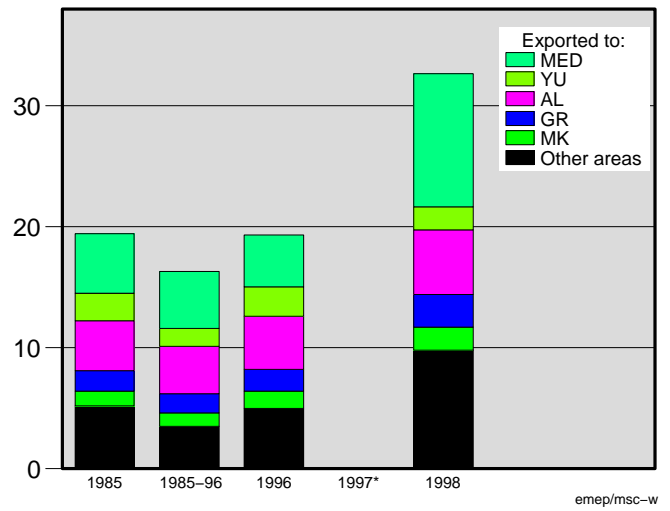
<http://www.emep.int>

Deposition of oxidised sulphur

Albania

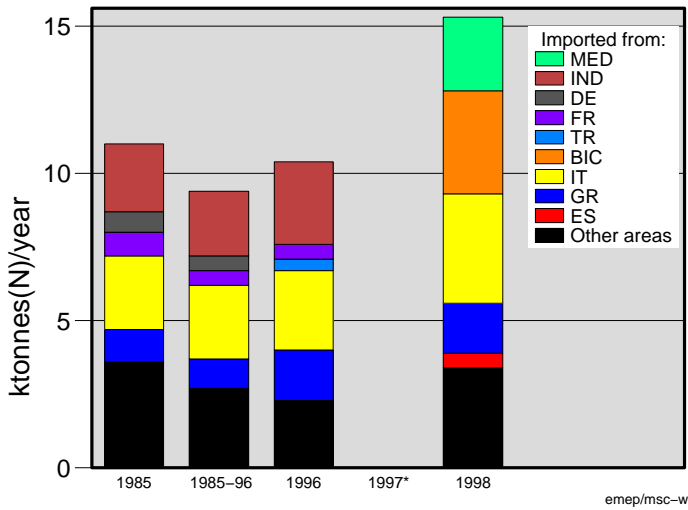


Albania

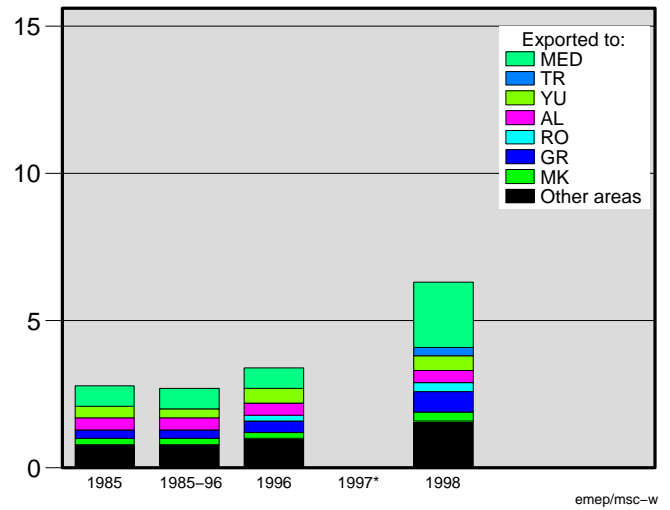


Deposition of oxidised nitrogen

Albania

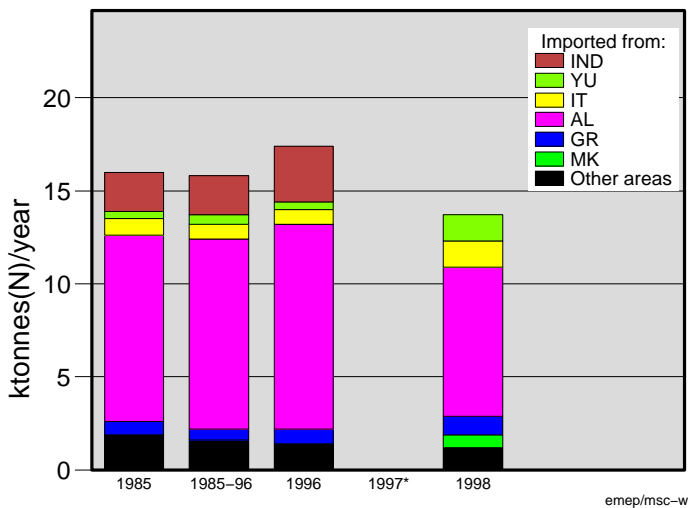


Albania

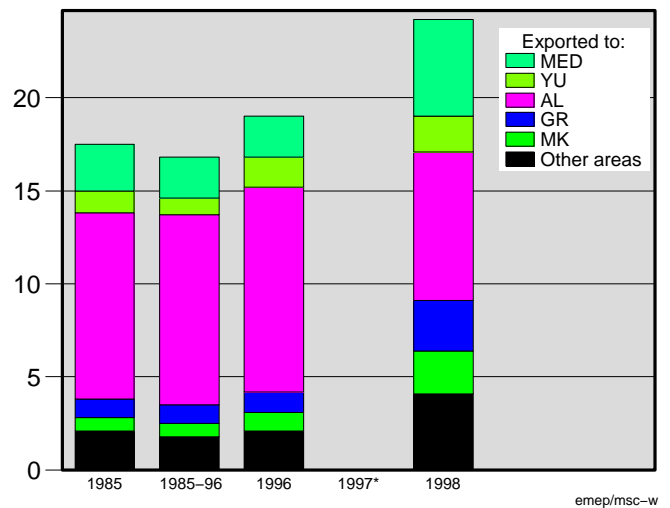


Deposition of reduced nitrogen

Albania

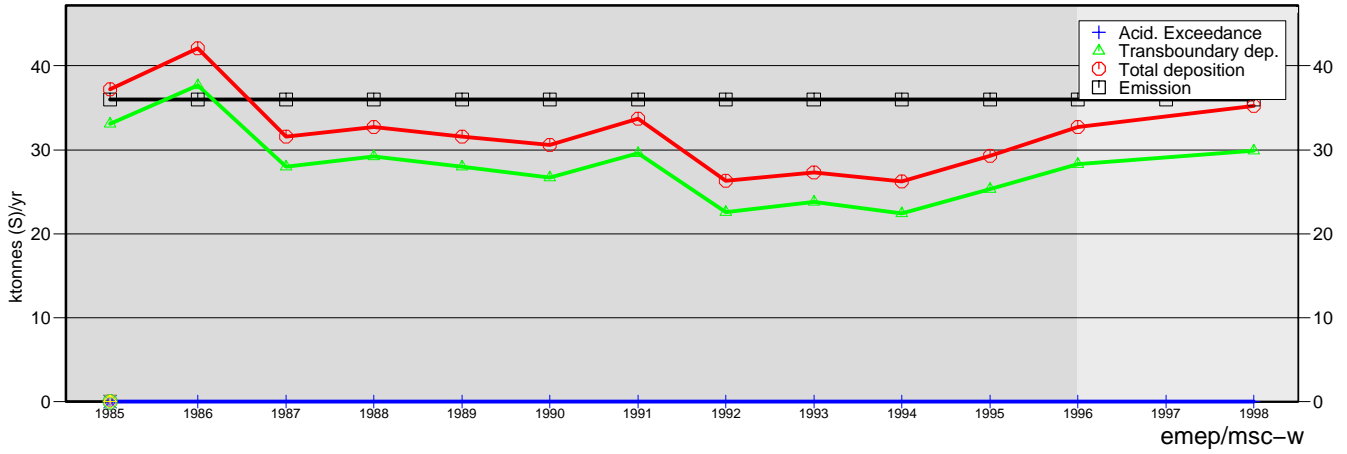


Albania

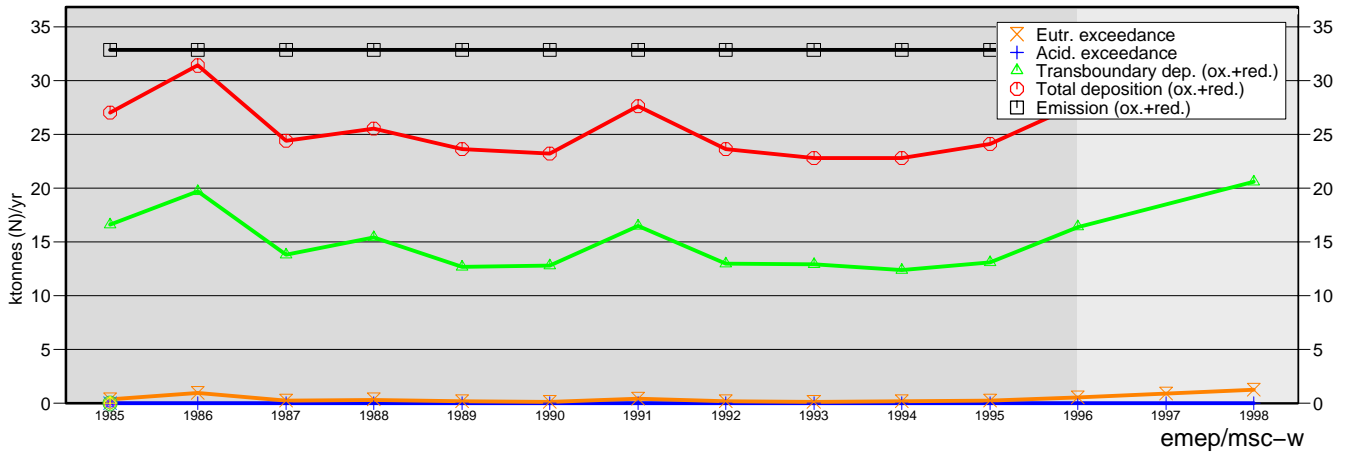


\* No recalculations have been made for 1997. These values are the same as reported last year.

## ACIDIFYING SULPHUR



## ACIDIFYING AND EUTROPHYING NITROGEN

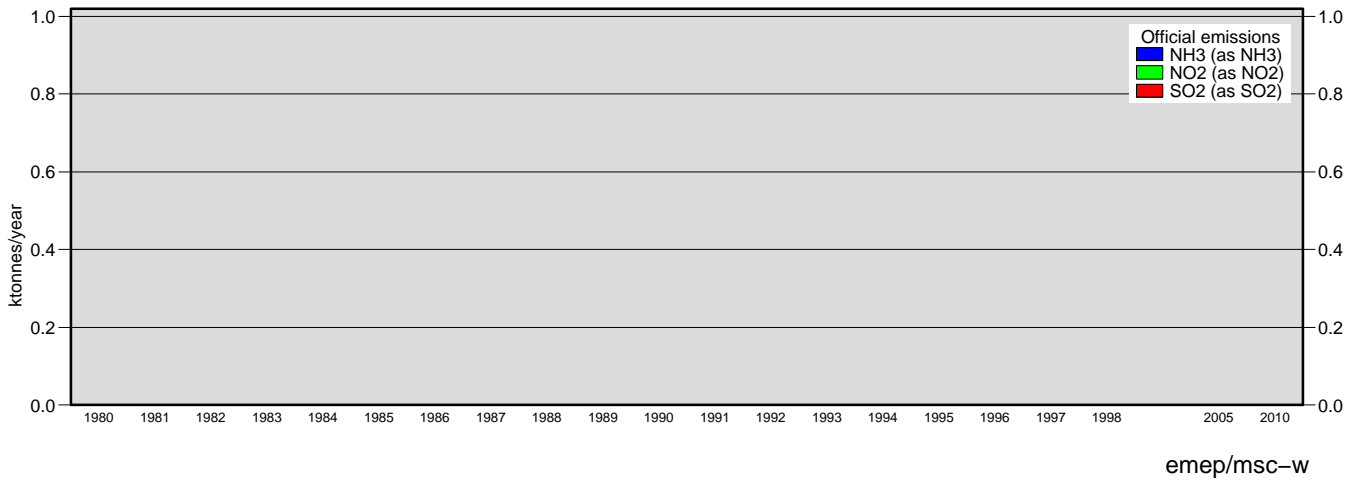


**Overview of data uncertainty for precipitation and air quality measurements**  
**A < ±10%, B < ±25%, C < ±30%, D > ±30% or unknown**

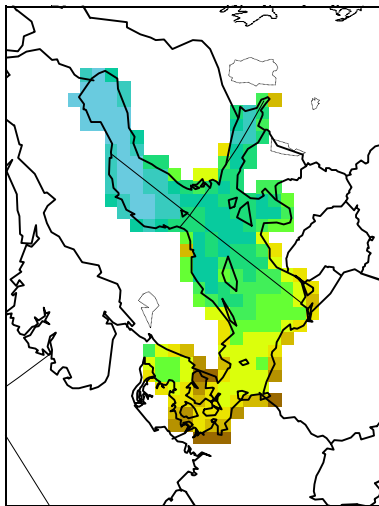
Air DATA QUALITY	SO2(g)	NO2(g)	HNO3(g)	NH3(g)	SO4(p)	NO3(p)	NH4(p)	HNO3(g)+NO3(p)	NH3(g)+NH4(p)
AL1 No stations									

Precipitation DATA QUALITY	SO4(l)	NO3(l)	NH4(l)	pH	H prec	Na	Cl	Ca	Mg	K	Conductivity prec
AL1 No stations											

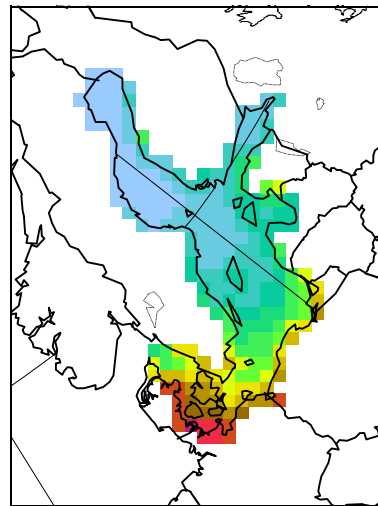
# Baltic Sea



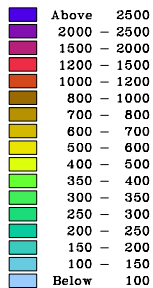
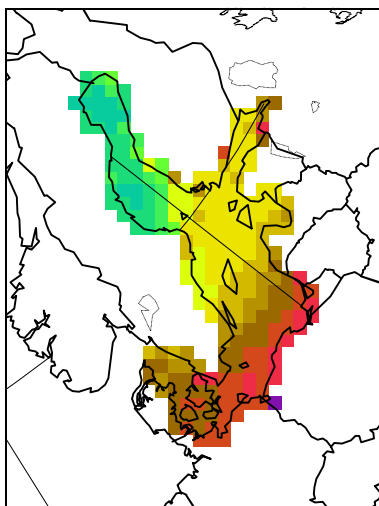
1998 deposition of oxidized nitrogen  
 mg N/m<sup>2</sup>



1998 deposition of reduced nitrogen  
 mg N/m<sup>2</sup>



1998 deposition of sulphur  
 mg S/m<sup>2</sup>

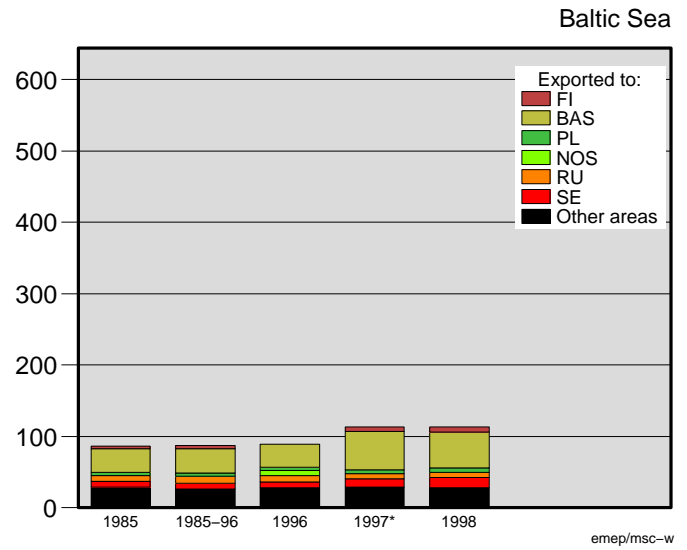
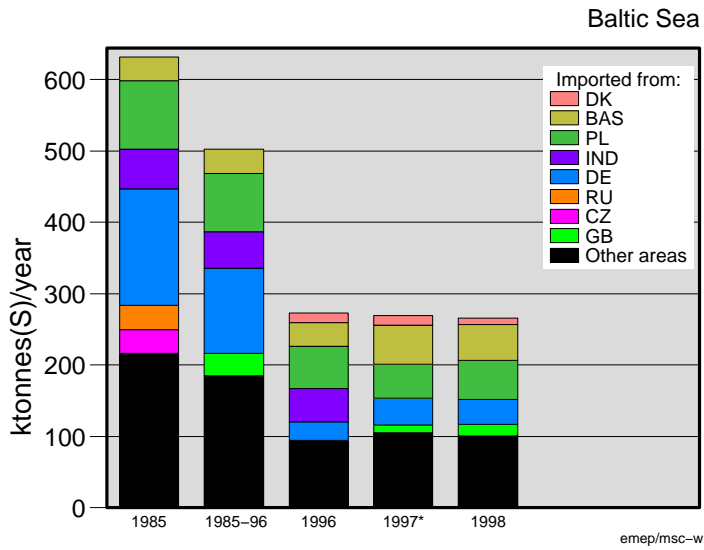


Country allocated maps and ASCII data files for air concentrations and depositions are available at

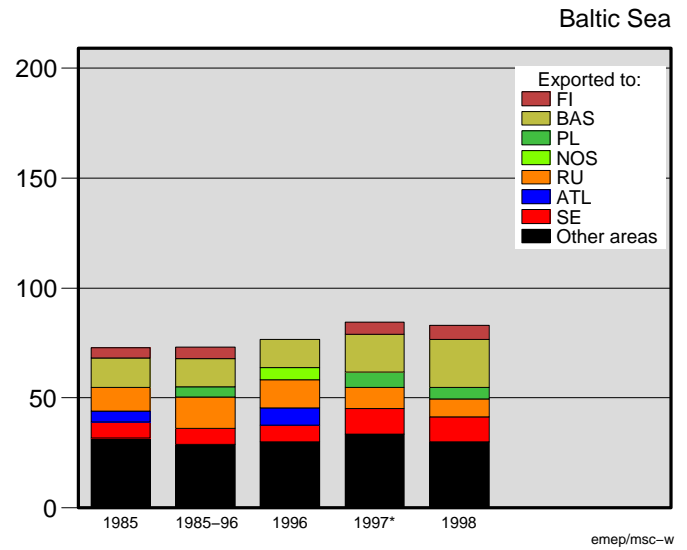
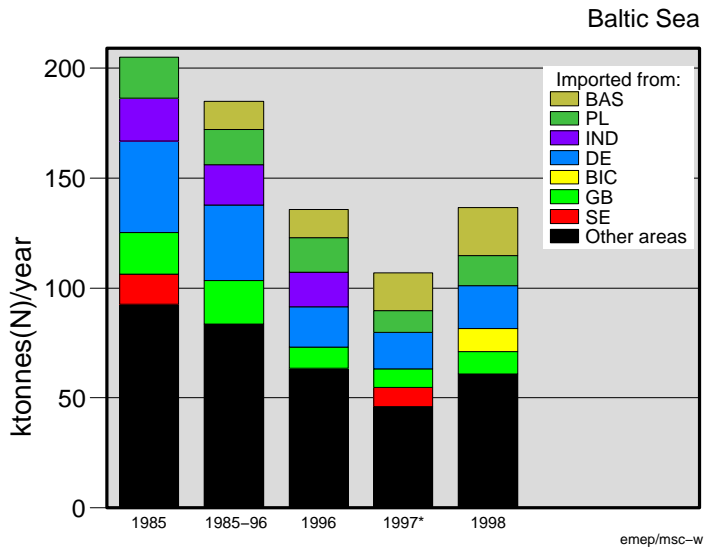
<http://www.emep.int>

emep/msc-w

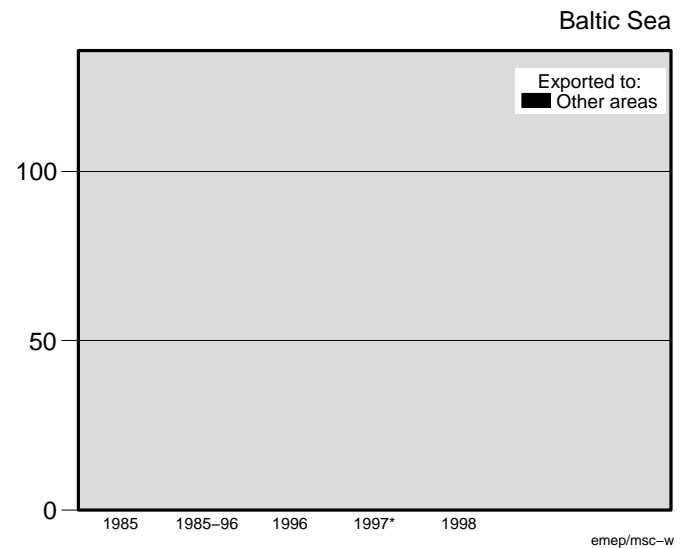
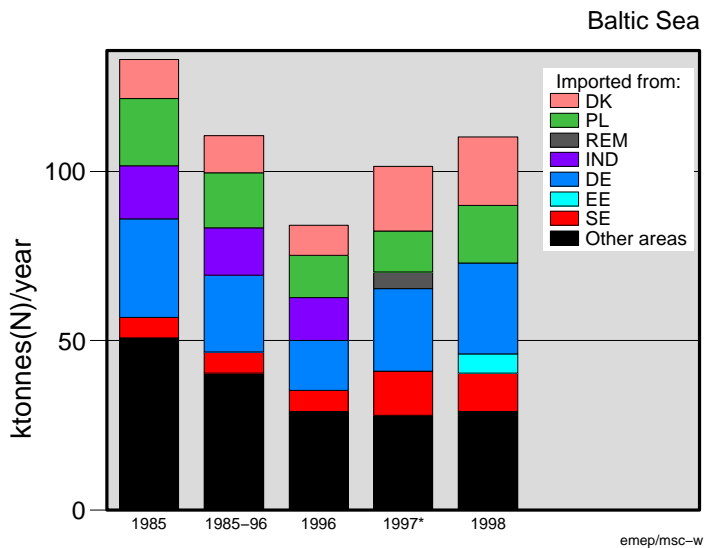
Deposition of oxidised sulphur



Deposition of oxidised nitrogen

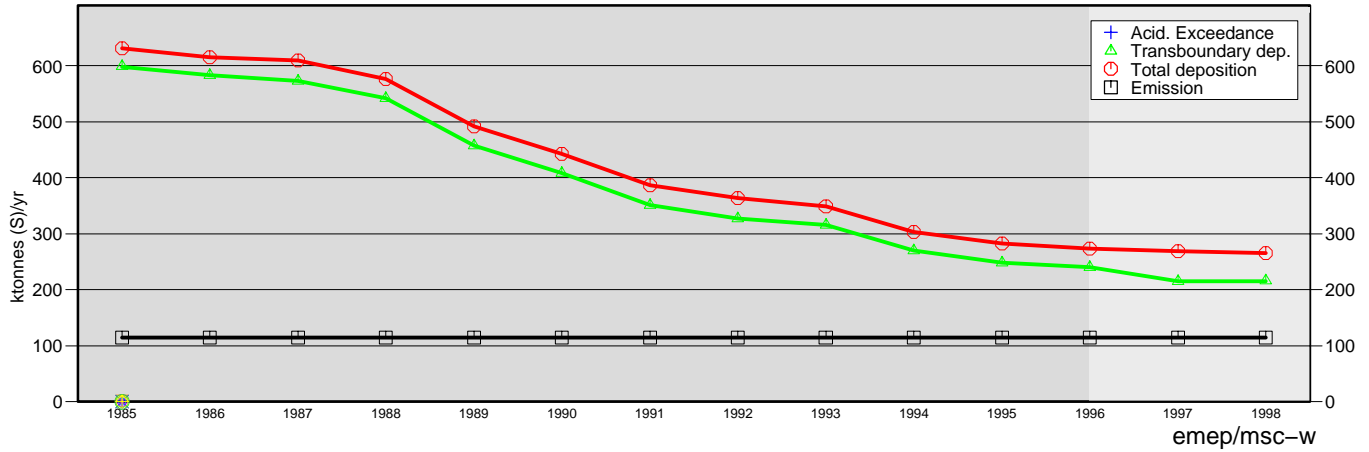


Deposition of reduced nitrogen

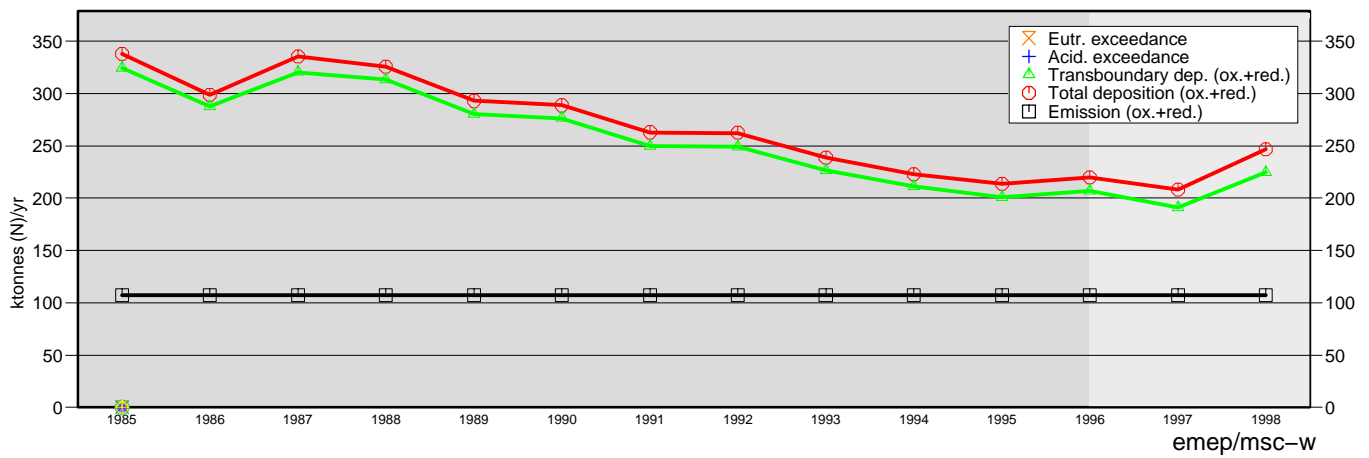


\* No recalculations have been made for 1997. These values are the same as reported last year.

## ACIDIFYING SULPHUR



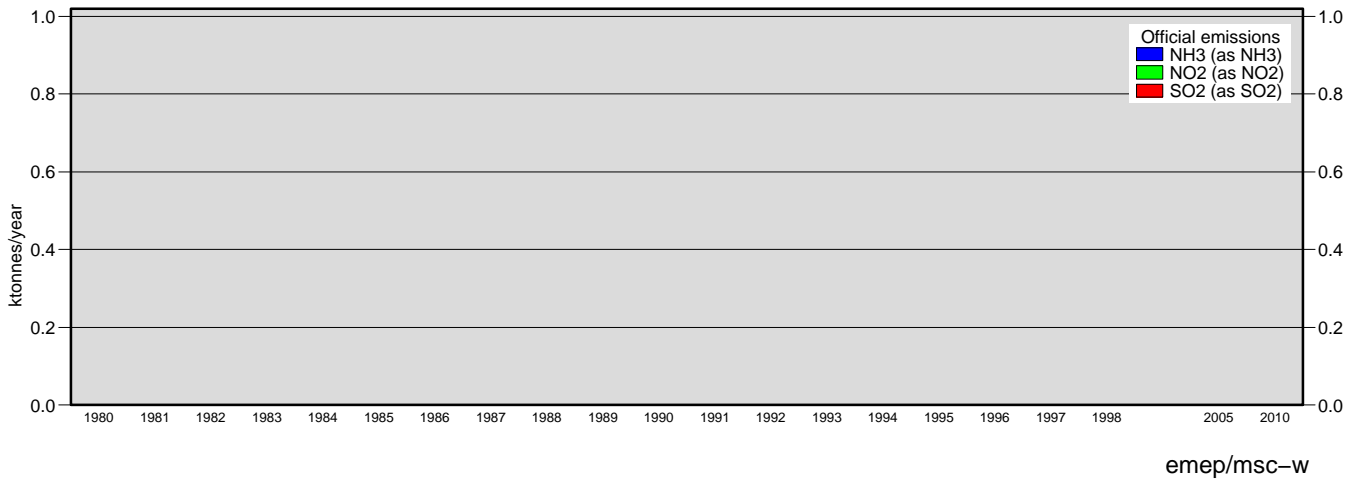
## ACIDIFYING AND EUTROPHYING NITROGEN



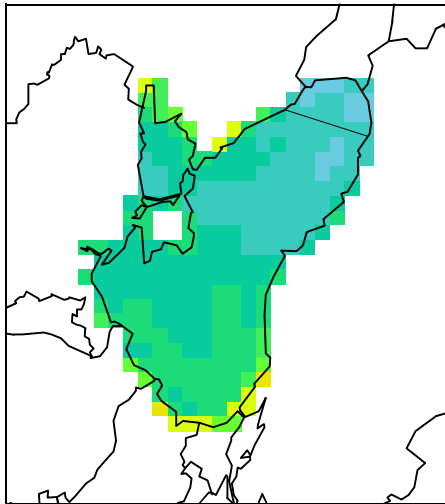




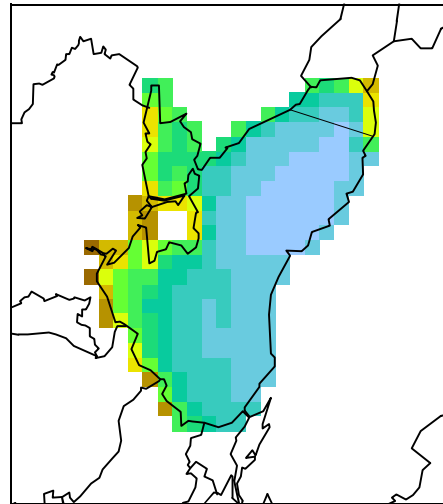
# Black Sea



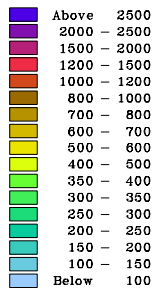
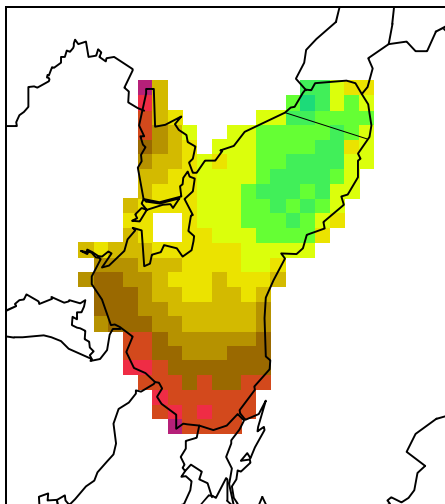
1998 deposition of oxidized nitrogen  
 mg N/m<sup>2</sup>



1998 deposition of reduced nitrogen  
 mg N/m<sup>2</sup>



1998 deposition of sulphur  
 mg S/m<sup>2</sup>

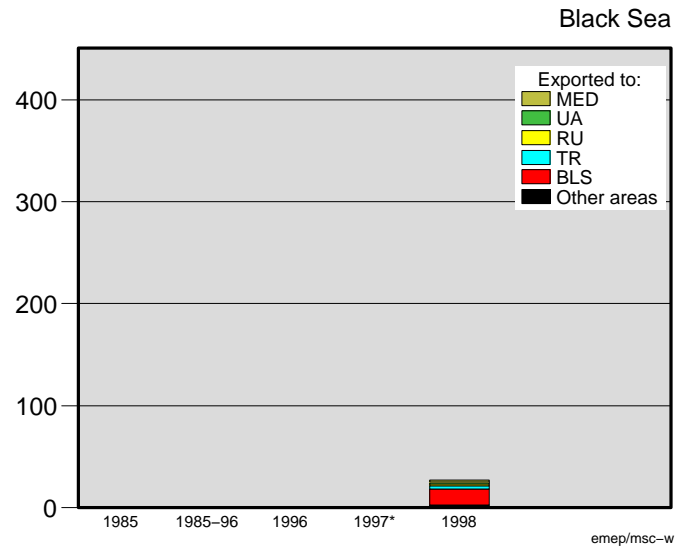
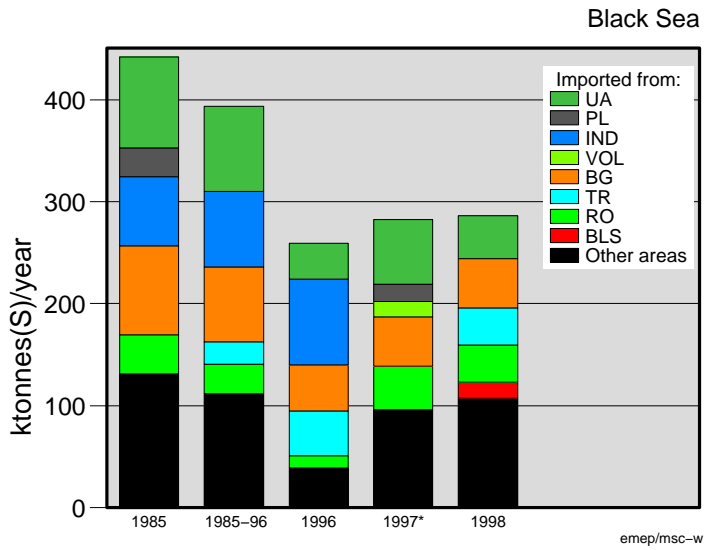


Country allocated maps and ASCII data files for air concentrations and depositions are available at

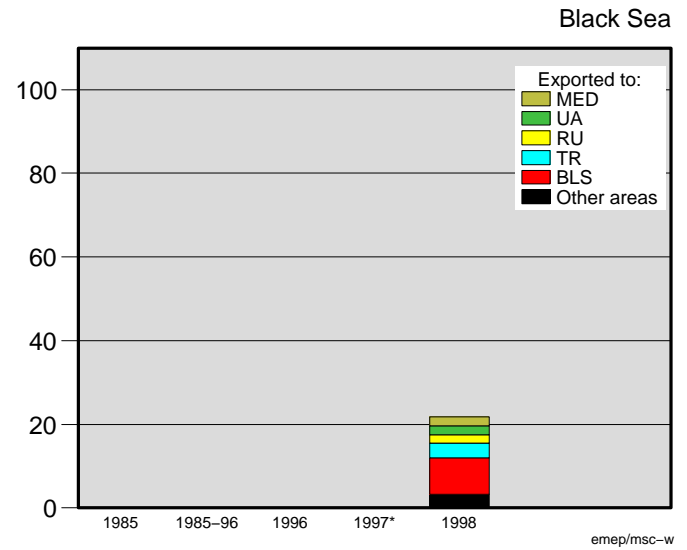
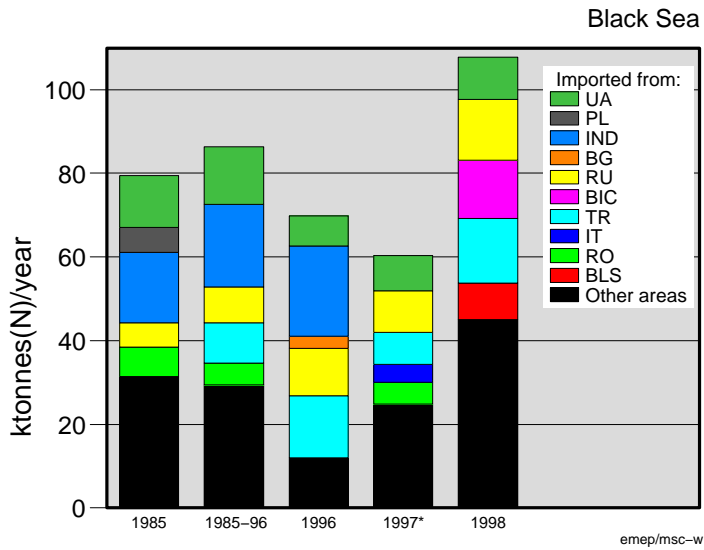
<http://www.emep.int>

emep/msc-w

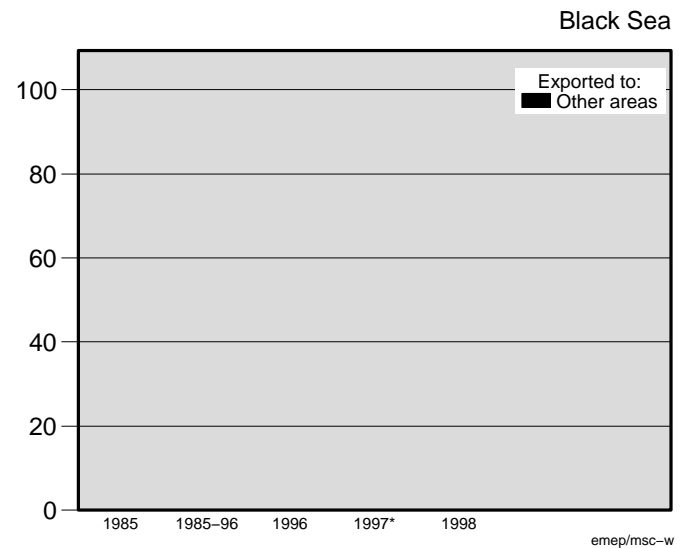
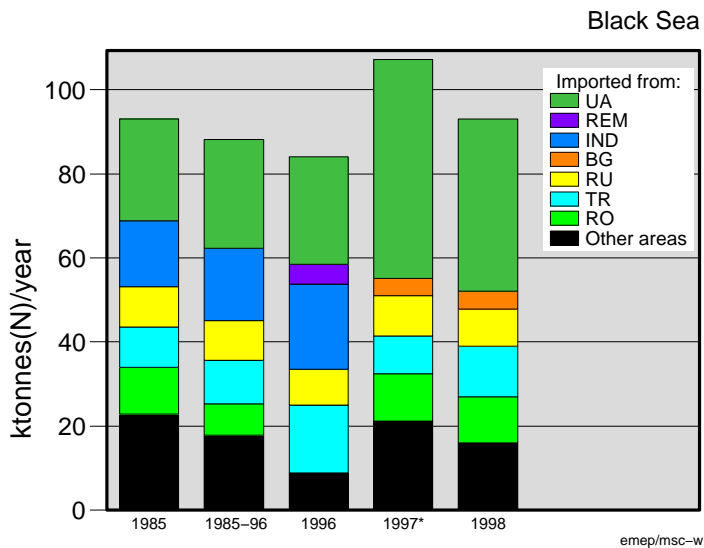
Deposition of oxidised sulphur



Deposition of oxidised nitrogen



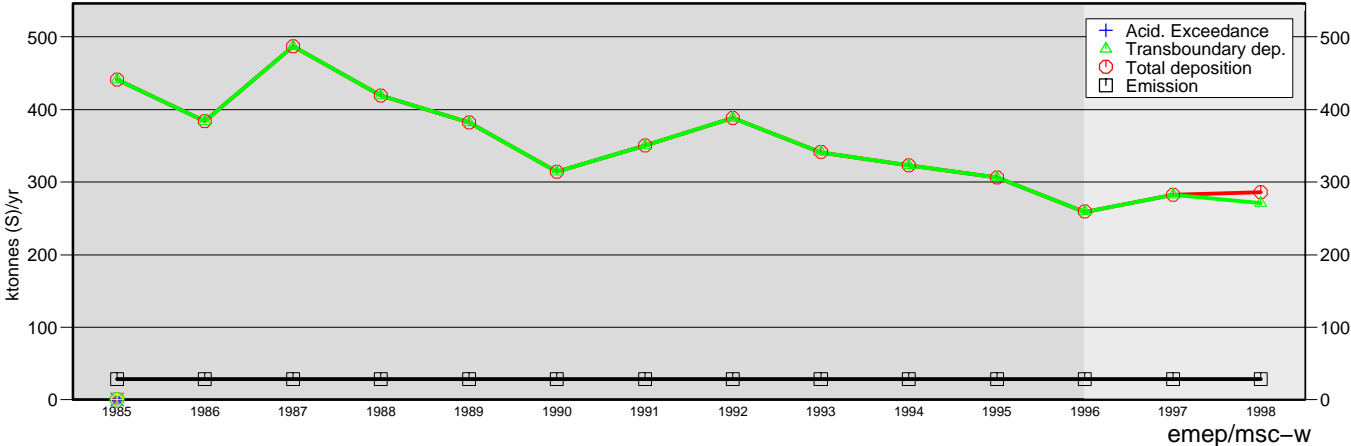
Deposition of reduced nitrogen



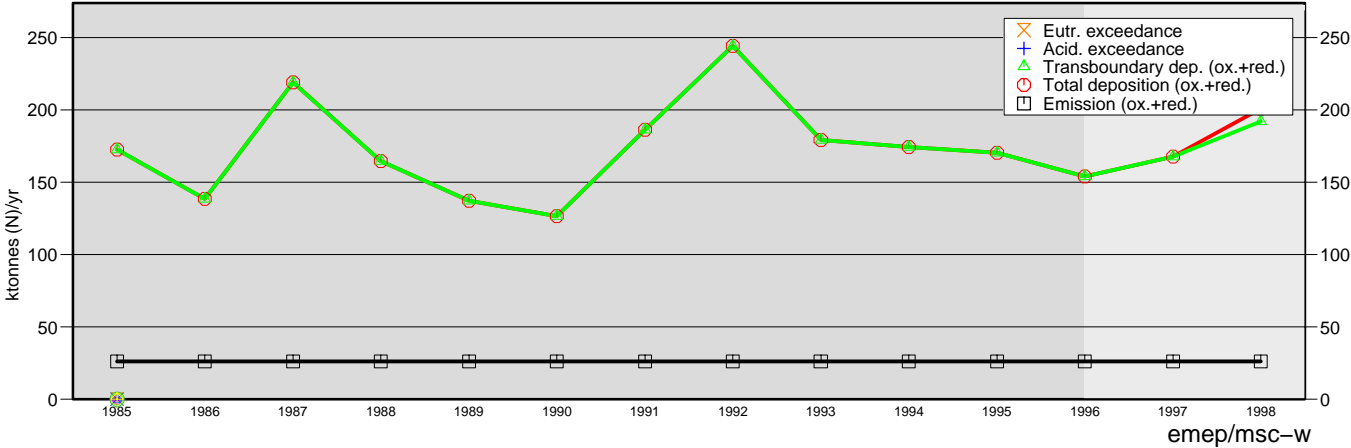
\* No recalculations have been made for 1997. These values are the same as reported last year.

# Black Sea

## ACIDIFYING SULPHUR

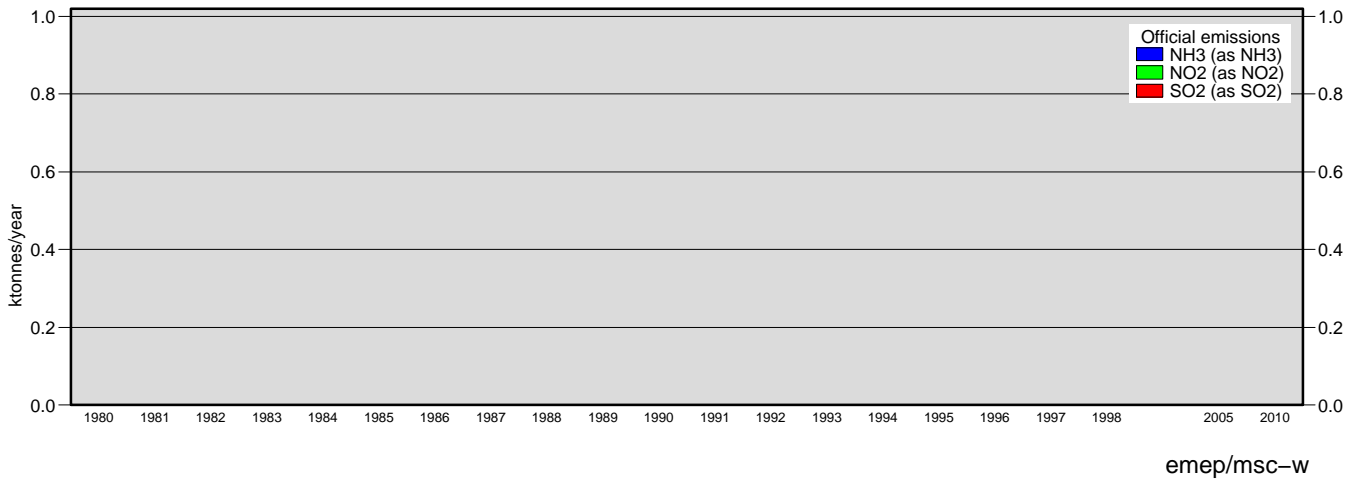


## ACIDIFYING AND EUTROPHYING NITROGEN

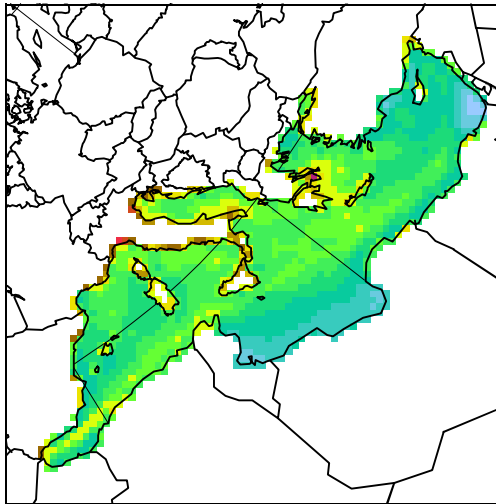




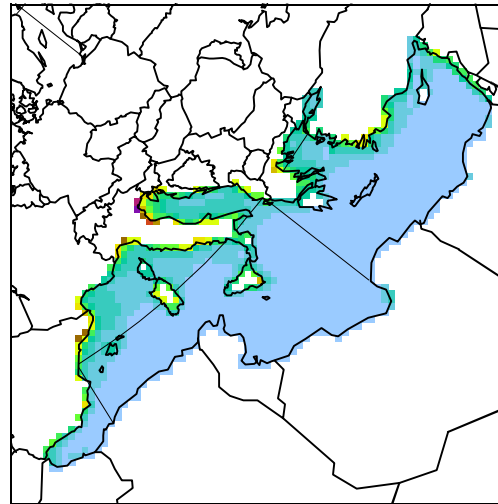
# Mediterranean Sea



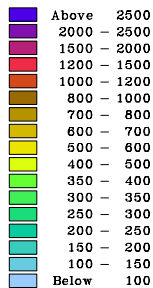
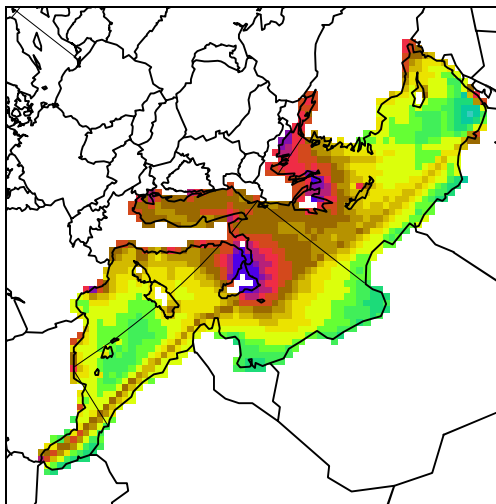
1998 deposition of oxidized nitrogen  
 mg N/m<sup>2</sup>



1998 deposition of reduced nitrogen  
 mg N/m<sup>2</sup>



1998 deposition of sulphur  
 mg S/m<sup>2</sup>



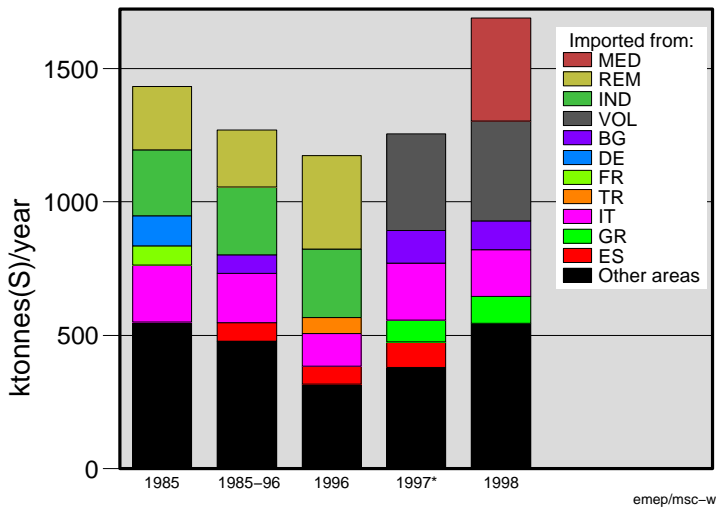
Country allocated maps and ASCII data files for air concentrations and depositions are available at

<http://www.emep.int>

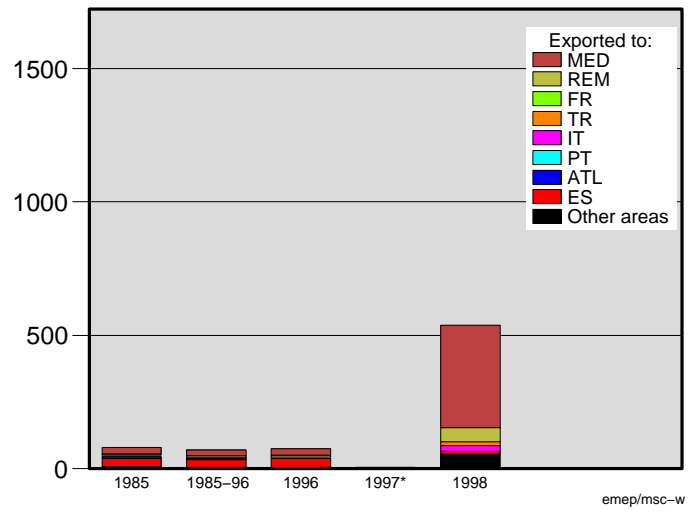
emep/msc-w

Deposition of oxidised sulphur

Mediterranean Sea

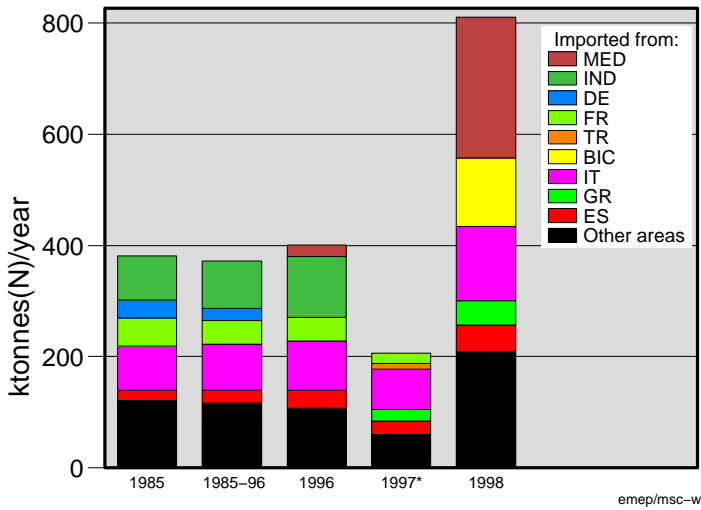


Mediterranean Sea

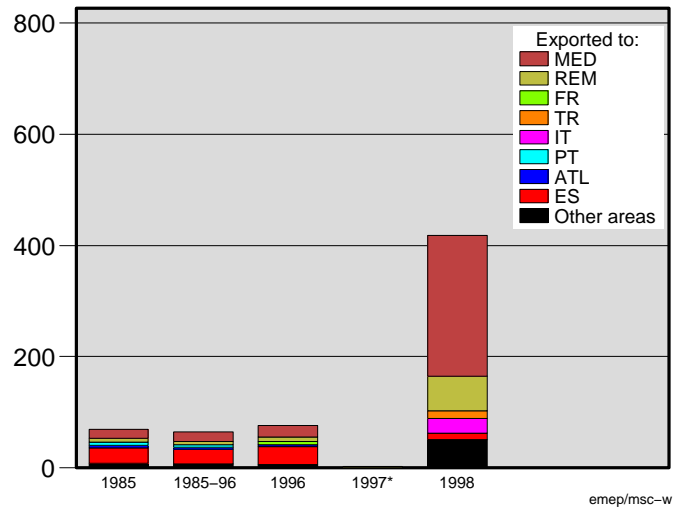


Deposition of oxidised nitrogen

Mediterranean Sea

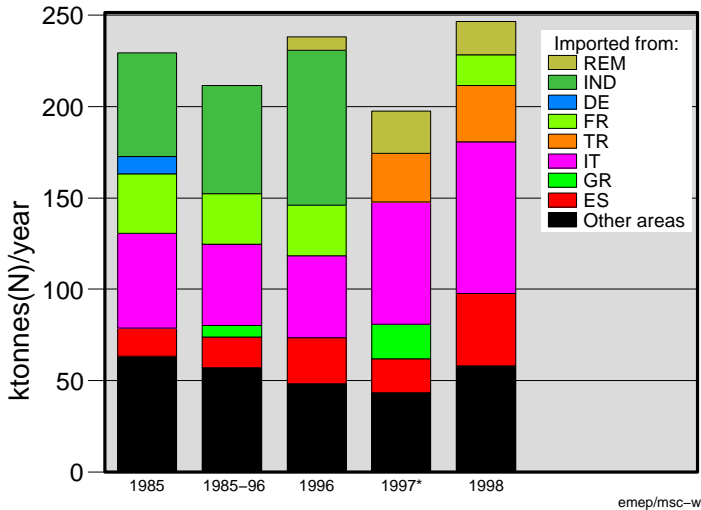


Mediterranean Sea

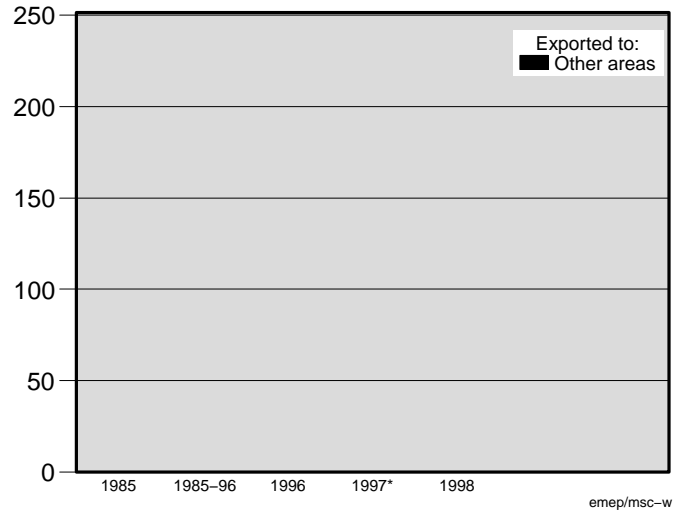


Deposition of reduced nitrogen

Mediterranean Sea



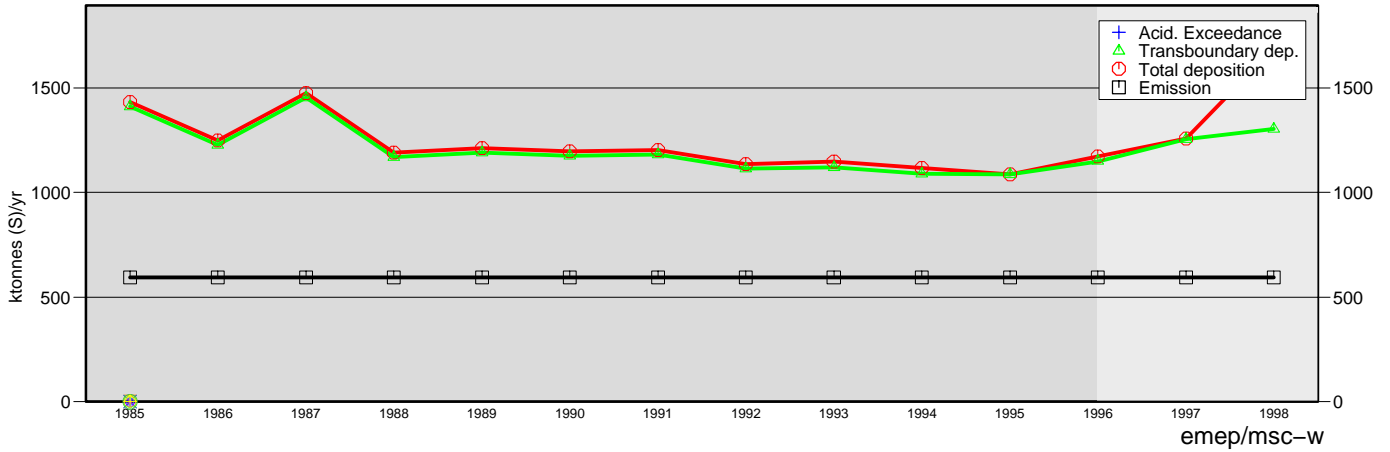
Mediterranean Sea



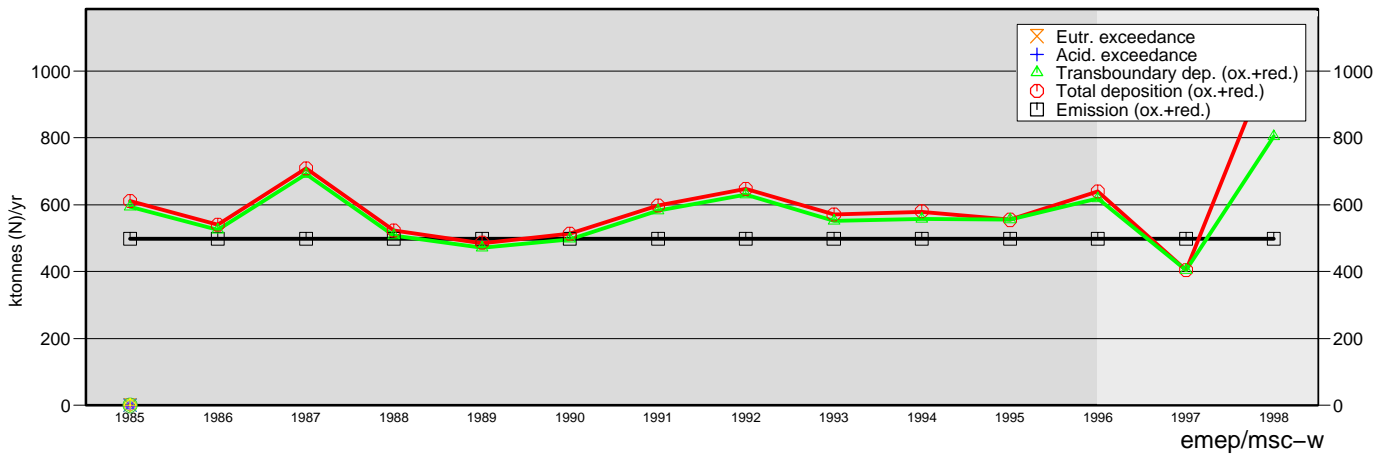
\* No recalculations have been made for 1997. These values are the same as reported last year.

# Mediterranean Sea

## ACIDIFYING SULPHUR



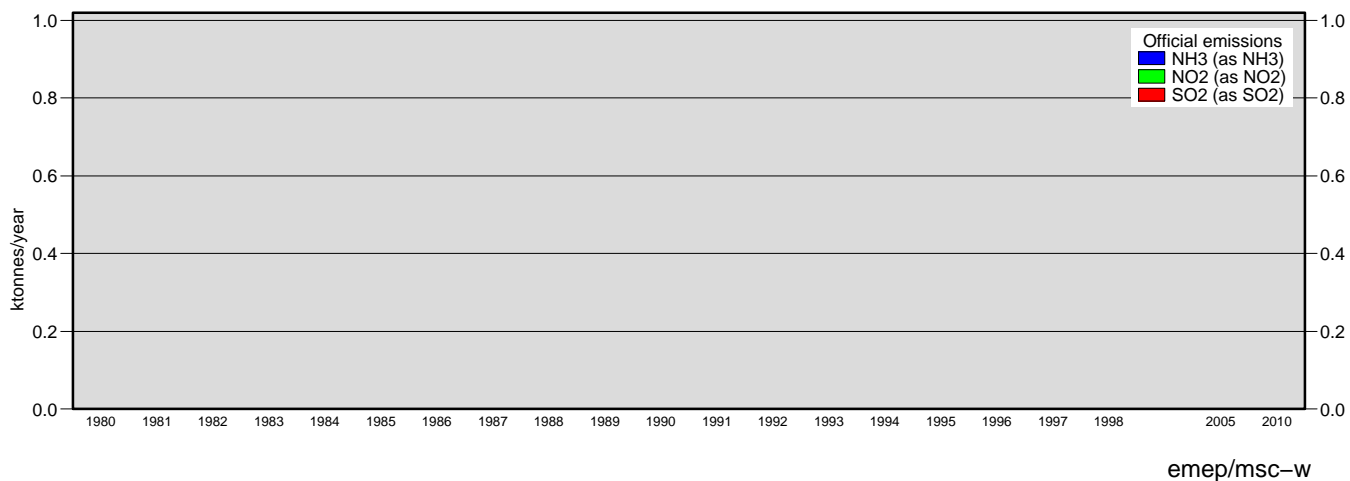
## ACIDIFYING AND EUTROPHYING NITROGEN



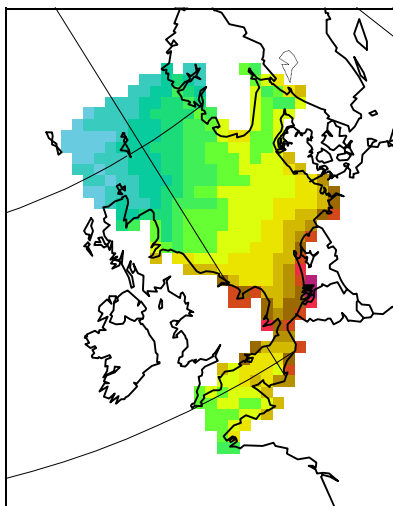




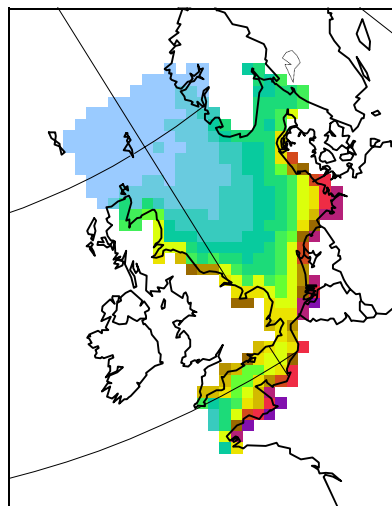
# North Sea



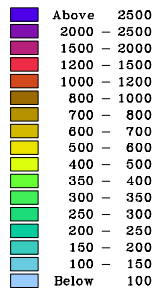
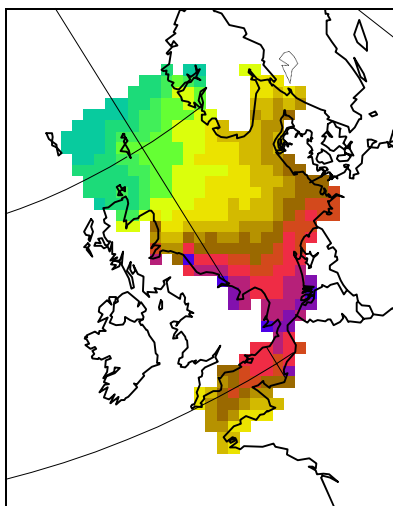
1998 deposition of oxidized nitrogen  
 mg N/m<sup>2</sup>



1998 deposition of reduced nitrogen  
 mg N/m<sup>2</sup>



1998 deposition of sulphur  
 mg S/m<sup>2</sup>

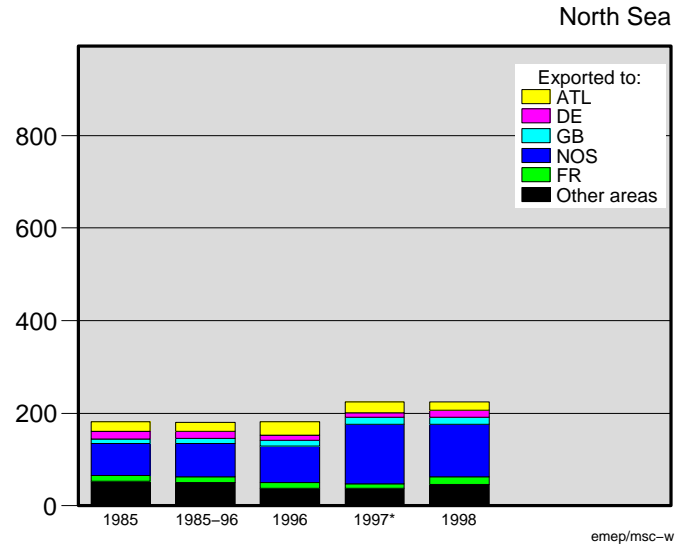
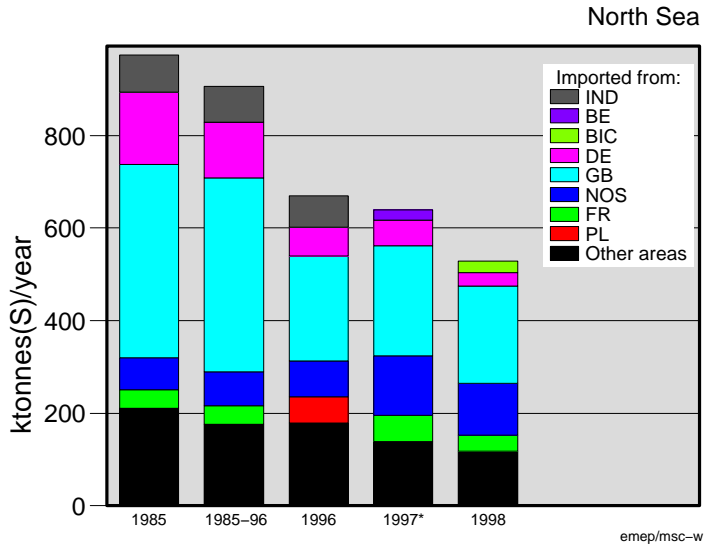


Country allocated maps and ASCII data files for air concentrations and depositions are available at

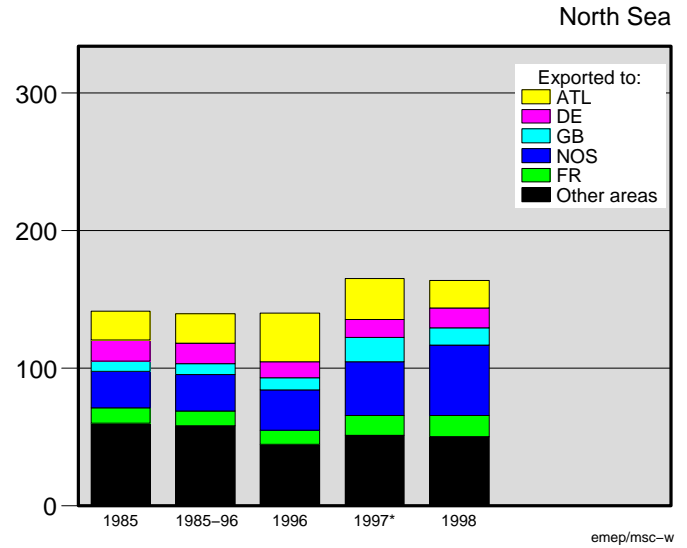
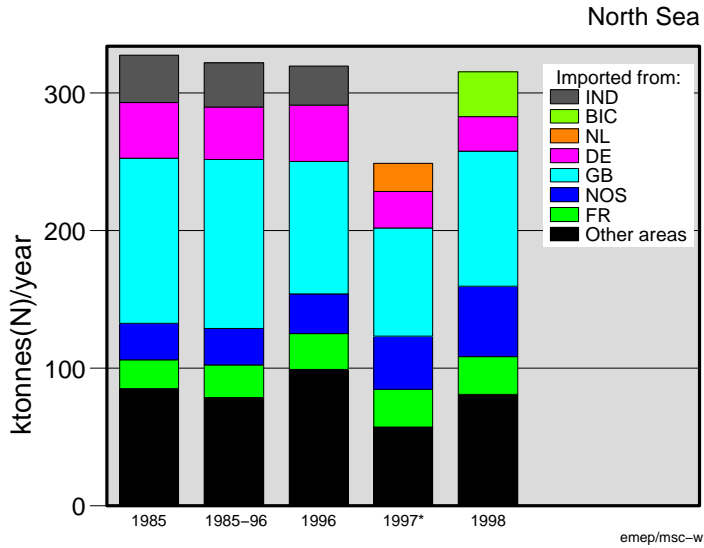
<http://www.emep.int>

emep/msc-w

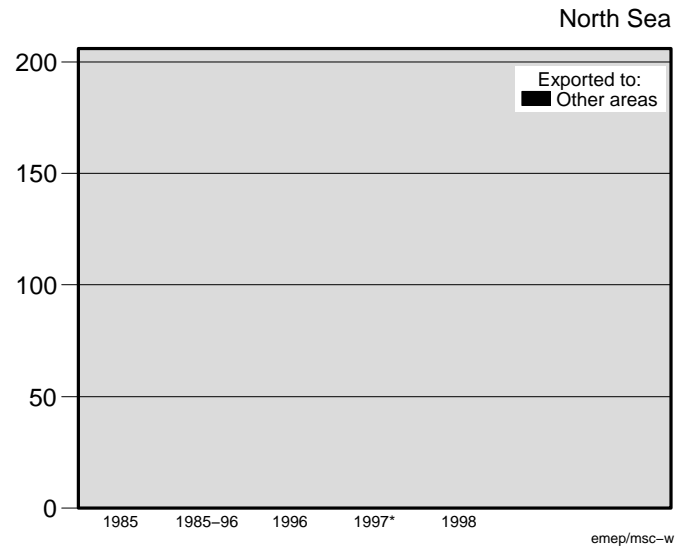
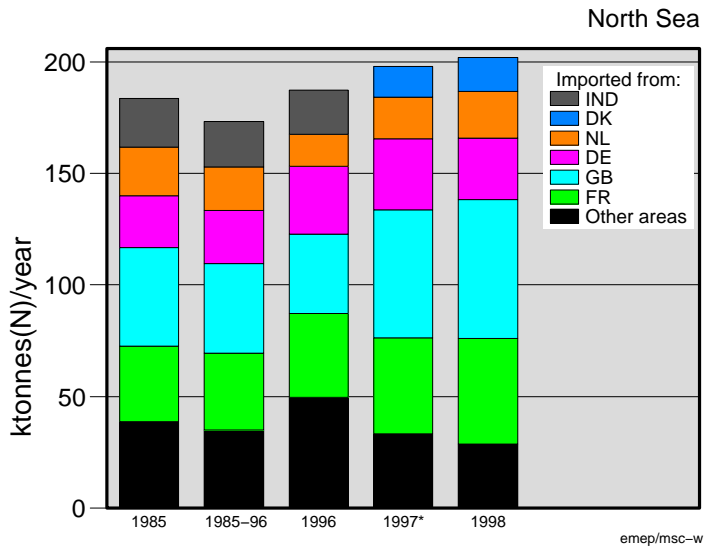
Deposition of oxidised sulphur



Deposition of oxidised nitrogen

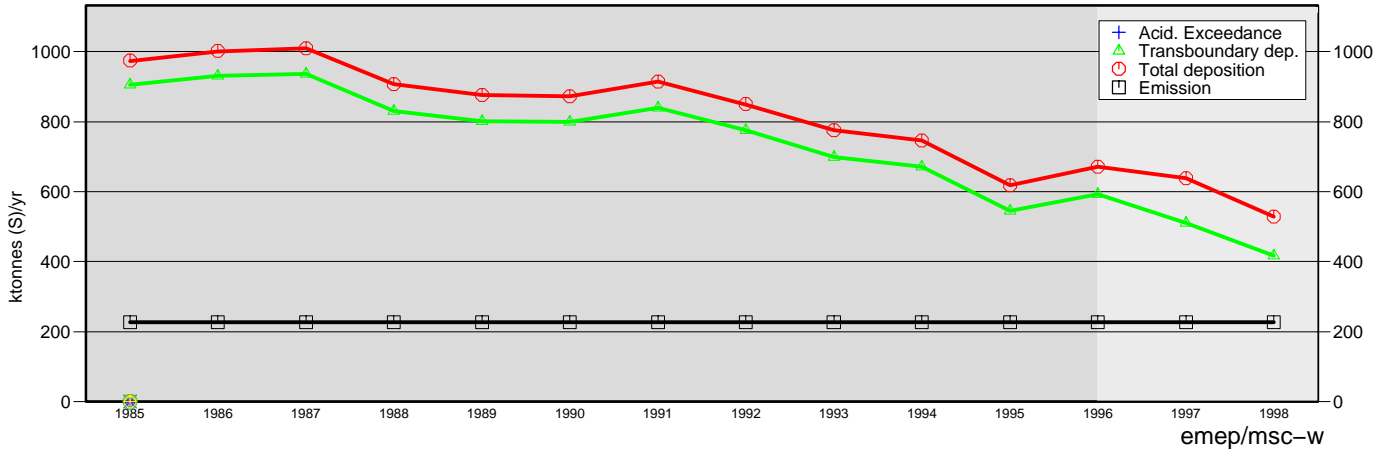


Deposition of reduced nitrogen

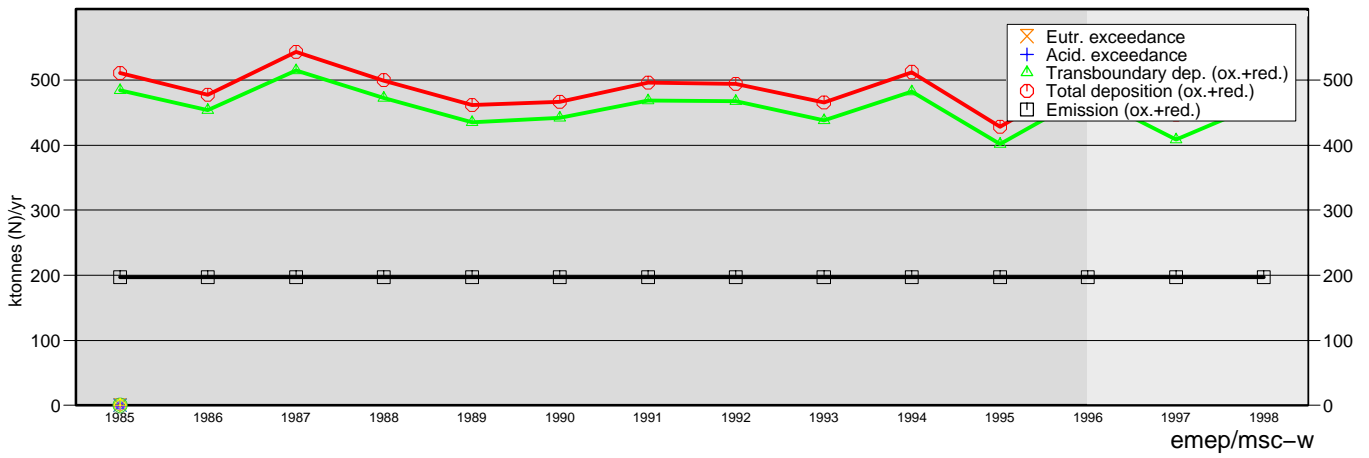


\* No recalculations have been made for 1997. These values are the same as reported last year.

## ACIDIFYING SULPHUR

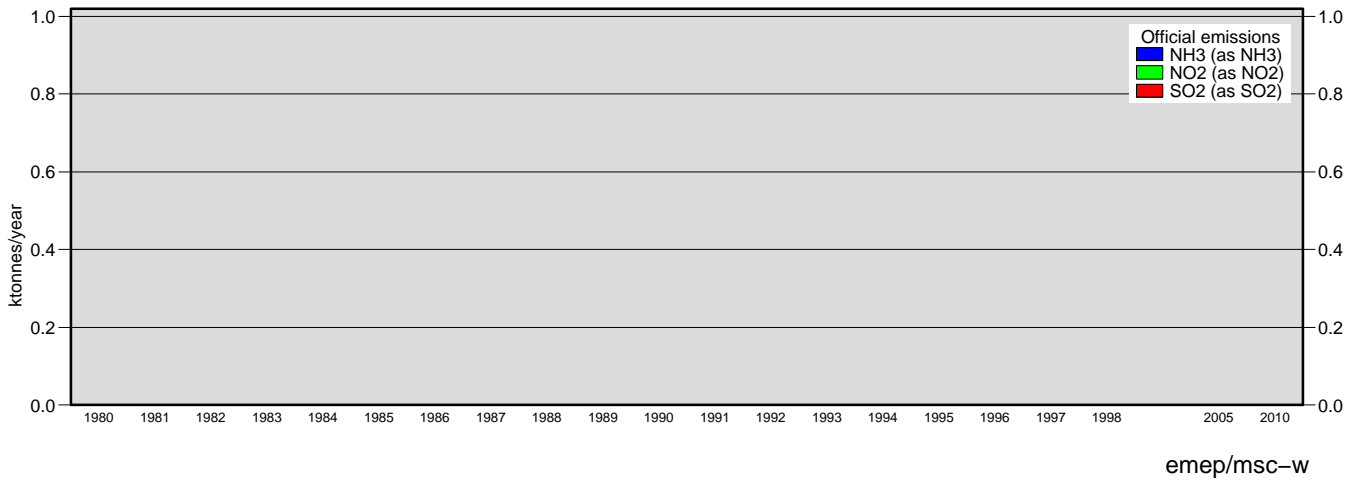


## ACIDIFYING AND EUTROPHYING NITROGEN

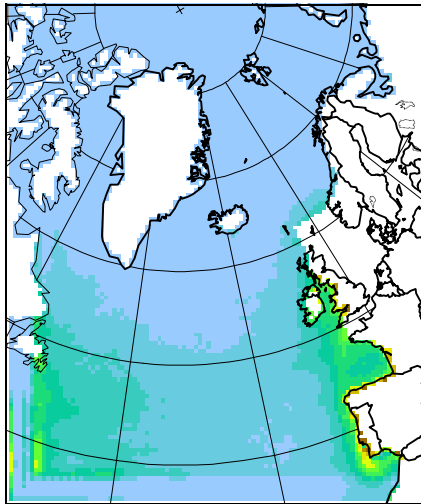




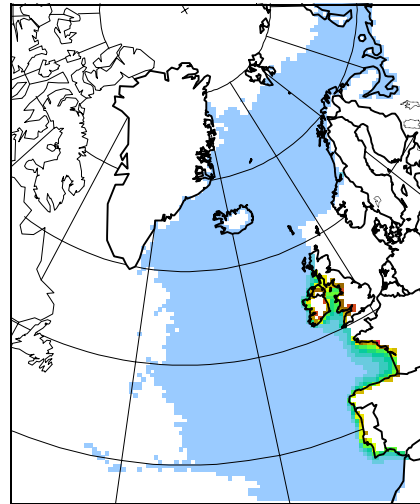
# Remaining North–East Atlantic Ocean



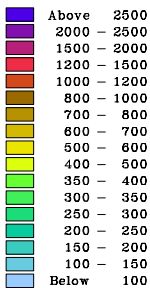
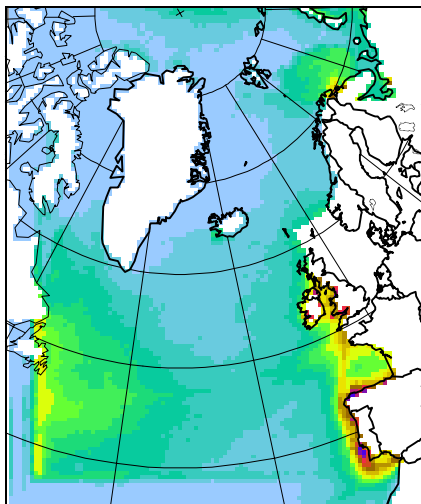
1998 deposition of oxidized nitrogen  
mg N/m<sup>2</sup>



1998 deposition of reduced nitrogen  
mg N/m<sup>2</sup>



1998 deposition of sulphur  
mg S/m<sup>2</sup>

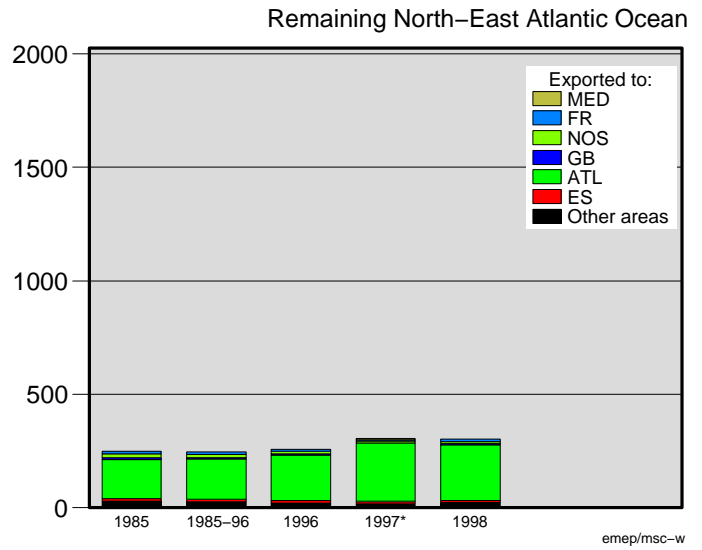
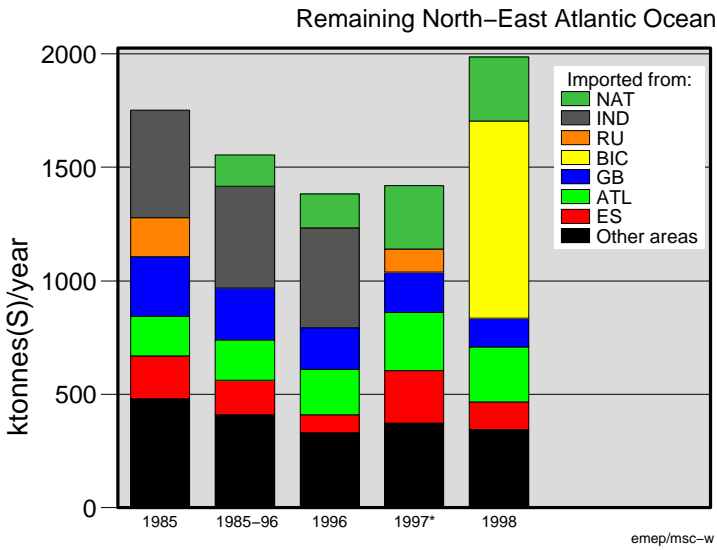


Country allocated maps and ASCII data files for air concentrations and depositions are available at

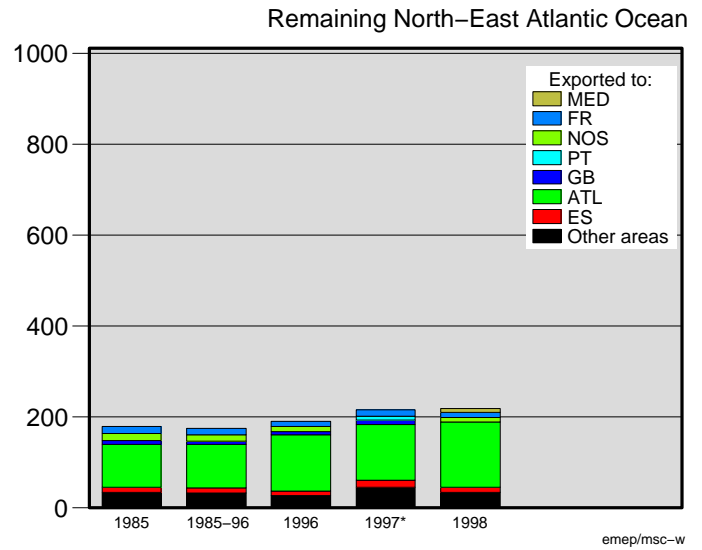
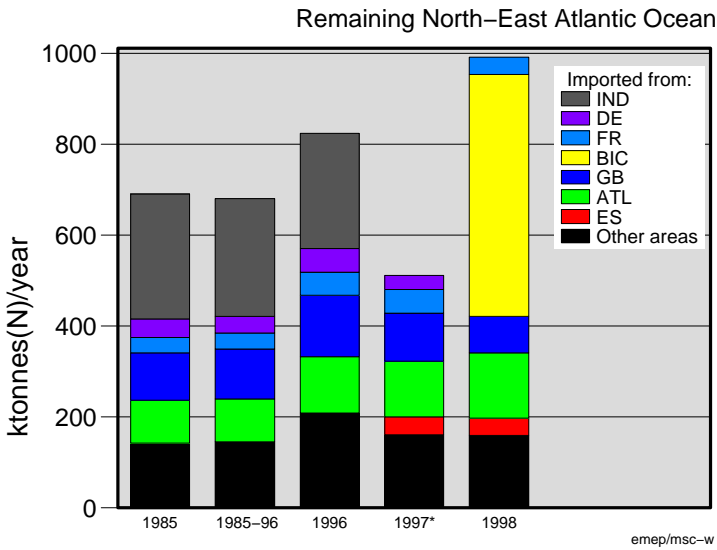
<http://www.emep.int>

emep/msc-w

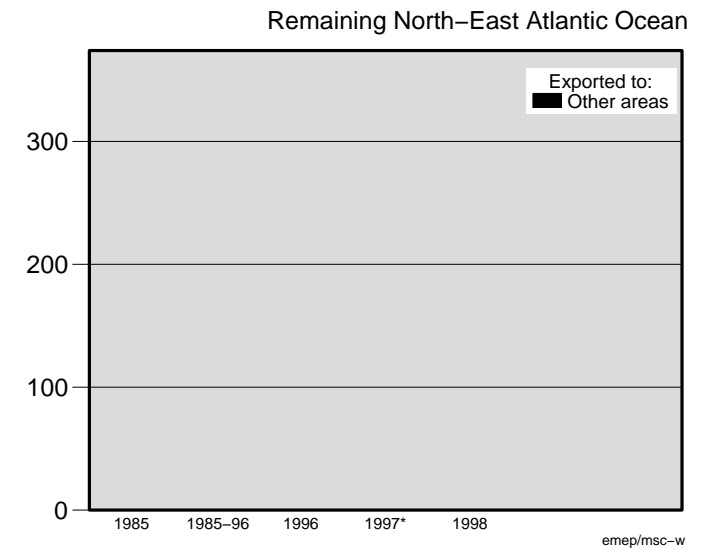
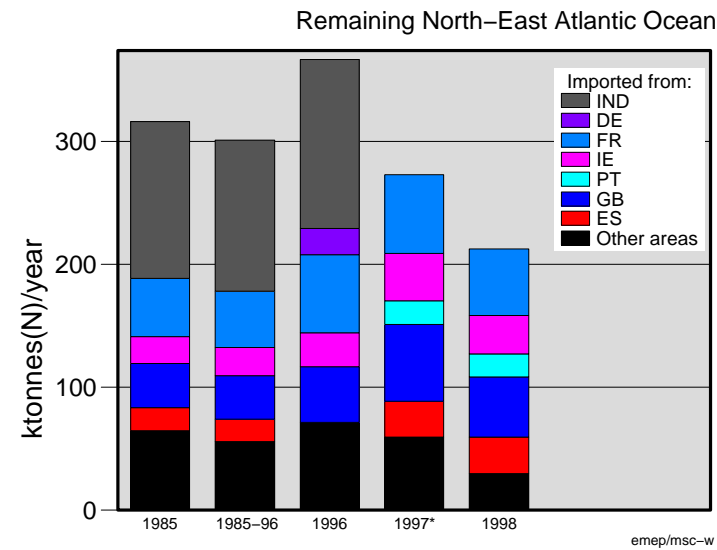
Deposition of oxidised sulphur



Deposition of oxidised nitrogen



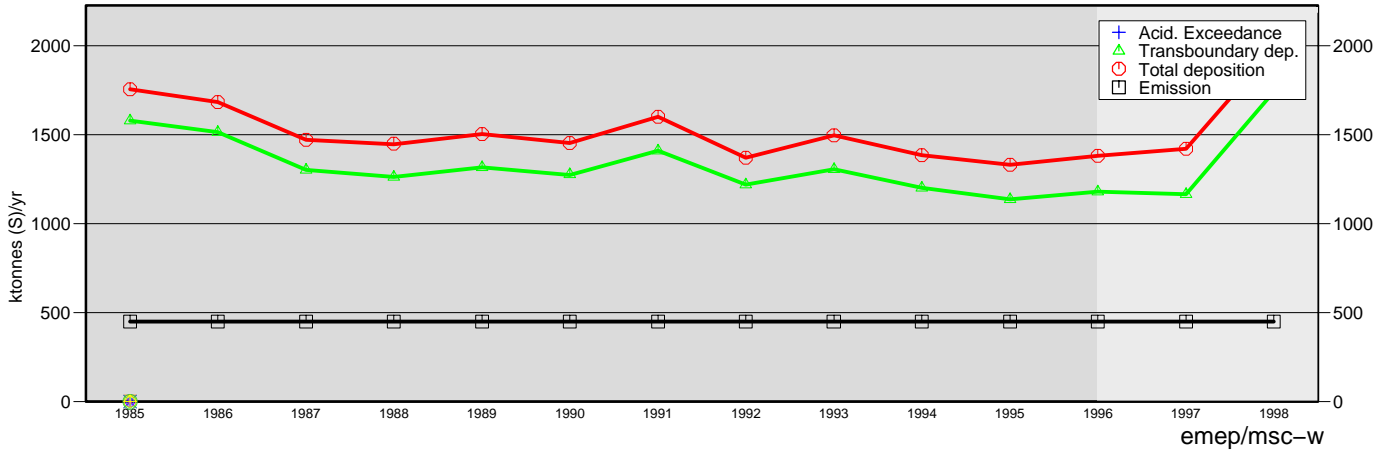
Deposition of reduced nitrogen



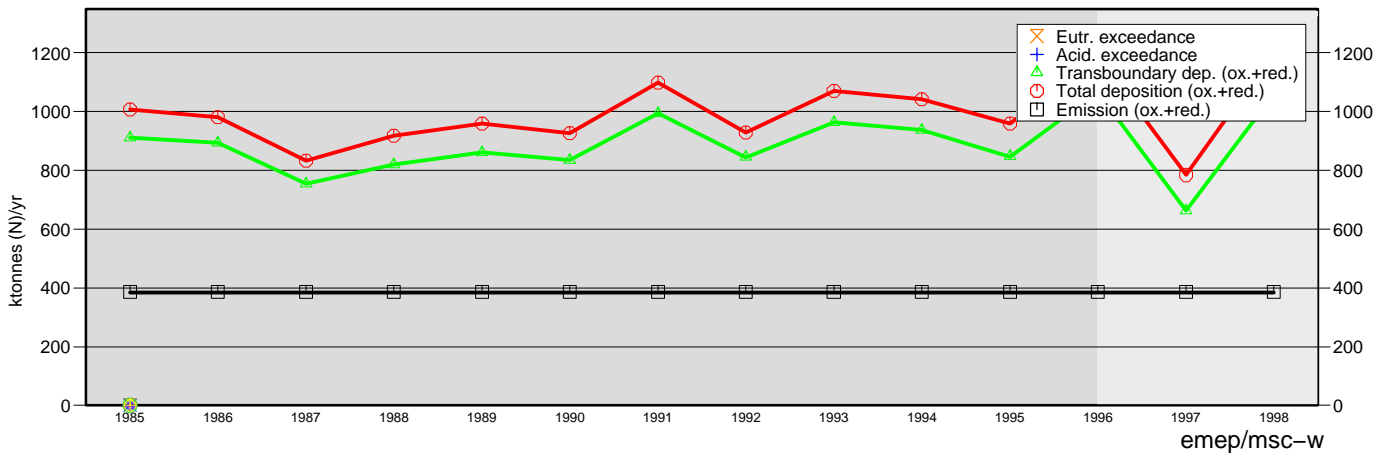
\* No recalculations have been made for 1997. These values are the same as reported last year.

# Remaining North-East Atlantic Ocean

## ACIDIFYING SULPHUR



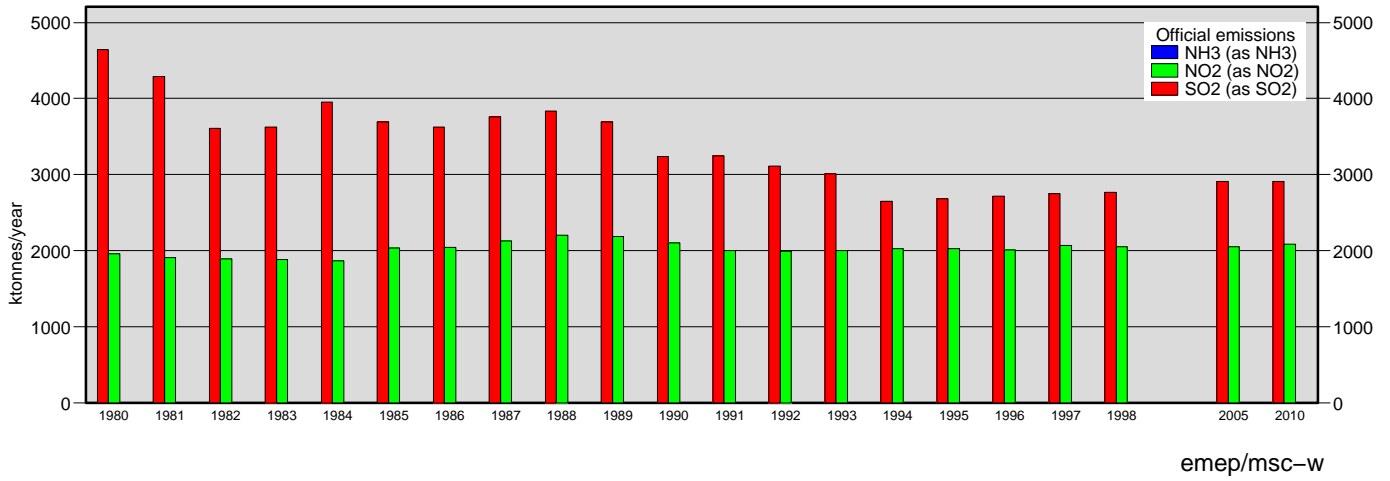
## ACIDIFYING AND EUTROPHYING NITROGEN



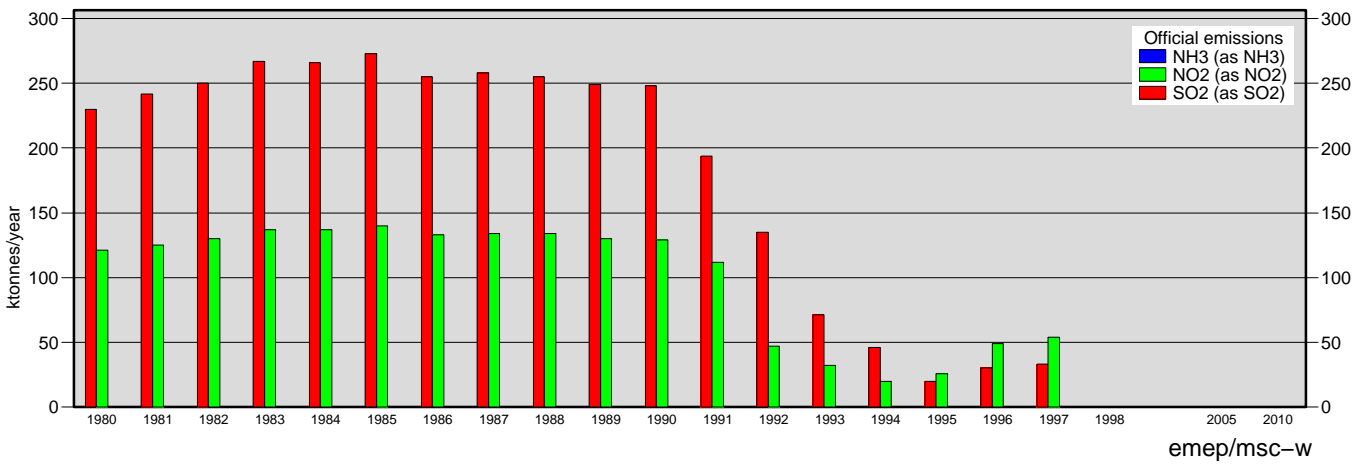




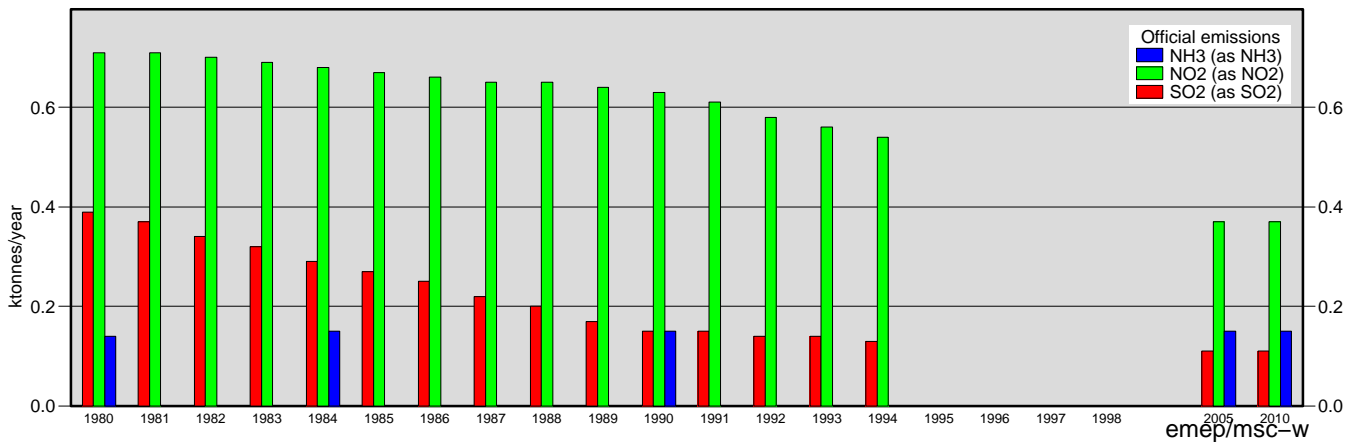
## Canada



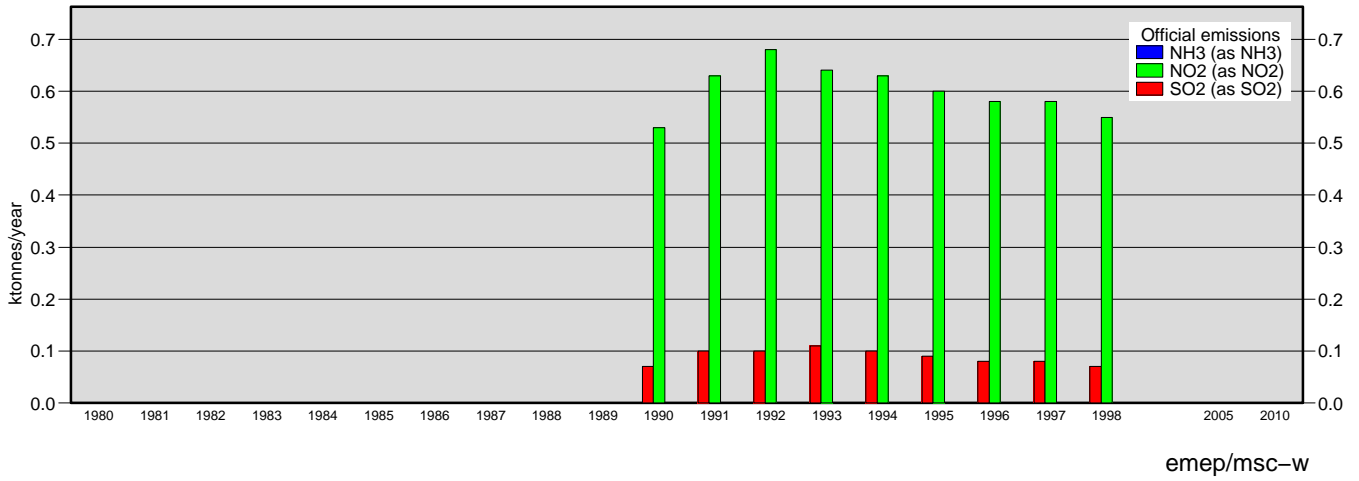
## Georgia



## Liechtenstein



# Monaco



# United States

